

anti- Galectin-1 antibody

Product Information

| | |
|---------------|-----------------------------------------------------------------------------------------------------------------|
| Catalog No.: | FNab03315 |
| Size: | 100µg |
| Form: | liquid |
| Purification: | Protein A+G purification |
| Purity: | ≥95% as determined by SDS-PAGE |
| Host: | Mouse |
| Clonality: | monoclonal |
| Clone ID: | 9F4 |
| IsoType: | IgG1 |
| Storage: | PBS with 0.02% sodium azide and 50% glycerol pH 7.3, -20°C for 12 months (Avoid repeated freeze / thaw cycles.) |

Background

None

Immunogen information

| | |
|--------------|------------------------------------------------------------------------------------------------------------------------------------------------------------------|
| Immunogen: | lectin, galactoside-binding, soluble, 1 |
| Synonyms: | 14 kDa laminin binding protein, 14 kDa lectin, Gal 1, GAL1, Galaptin, Galectin 1, Galectin-1, HBL, HLBP14, HPL, Lactose binding lectin 1, LGALS1, S Lac lectin 1 |
| Observed MW: | 15 kDa |
| Uniprot ID : | P09382 |

Application

| | |
|-----------------------|-----------------------------------|
| Reactivity: | Human, Mouse |
| Tested Application: | ELISA, WB, IHC |
| Recommended dilution: | WB: 1:500-1:2000; IHC: 1:20-1:200 |
| Image: | |

1

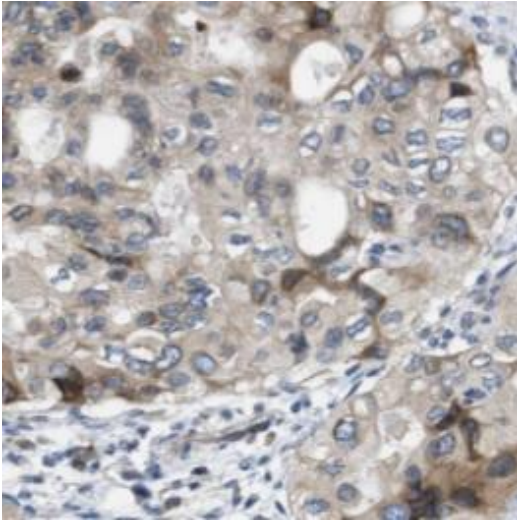
Wuhan Fine Biotech Co., Ltd.

B9 Bld, High-Tech Medical Devices Park, No. 818 Gaoxin Ave. East Lake High-Tech Development Zone. Wuhan, Hubei, China(430206)

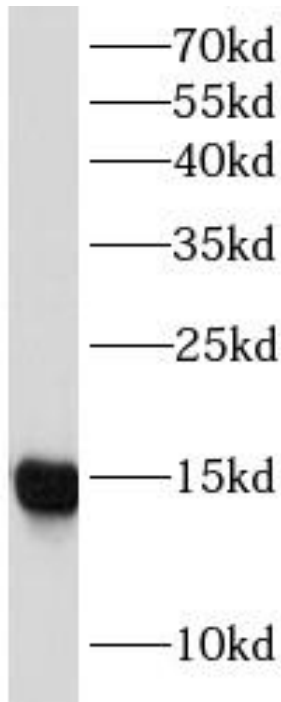
Tel : (0086)027-87384275

Fax: (0086)027-87800889

www.fn-test.com



Immunohistochemistry of paraffin-embedded human pancreas cancer using FNab03315(GAL1 antibody) at dilution of 1:100



HepG2 cells were subjected to SDS PAGE followed by western blot with FNab03315(GAL1 antibody) at dilution of 1:1000