

anti- EZH2 antibody

Product Information

Catalog No.:	FNab02918
Size:	100µg
Form:	liquid
Purification:	Immunogen affinity purified
Purity:	≥95% as determined by SDS-PAGE
Host:	Rabbit
Clonality:	polyclonal
Clone ID:	None
IsoType:	IgG
Storage:	PBS with 0.02% sodium azide and 50% glycerol pH 7.3, -20°C for 12 months (Avoid repeated freeze / thaw cycles.)

Background

Polycombgroup(PcG) protein. Catalytic subunit of the PRC2/EED-EZH2 complex, which methylates 'Lys-9'(H3K9me) and 'Lys-27'(H3K27me) of histone H3, leading to transcriptional repression of the affected target gene. Able to mono-, di- and trimethylate 'Lys-27' of histone H3 to form H3K27me1, H3K27me2 and H3K27me3, respectively. Compared to EZH2-containing complexes, it is more abundant in embryonic stem cells and plays a major role in forming H3K27me3, which is required for embryonic stem cell identity and proper differentiation. The PRC2/EED-EZH2 complex may also serve as a recruiting platform for DNA methyltransferases, thereby linking two epigenetic repression systems. Genes repressed by the PRC2/EED-EZH2 complex include HOXC8, HOXA9, MYT1, CDKN2A and retinoic acid target genes. EZH2 can also methylate non-histone proteins such as the transcription factor GATA4 and the nuclear receptor RORA. Regulates the circadian clock via histone methylation at the promoter of the circadian genes. Essential for the CRY1/2-mediated repression of the transcriptional activation of PER1/2 by the CLOCK-ARNTL/BMAL1 heterodimer; involved in the di and trimethylation of 'Lys-27' of histone H3 on PER1/2 promoters which is necessary for the CRY1/2 proteins to inhibit transcription.

Immunogen information

Immunogen: enhancer of zeste homolog 2(Drosophila)

Wuhan Fine Biotech Co., Ltd.

B9 Bld, High-Tech Medical Devices Park, No. 818 Gaoxin Ave. East Lake High-Tech Development Zone. Wuhan, Hubei, China(430206)

Tel : (0086)027-87384275

Fax: (0086)027-87800889 www.fn-test.com

Synonyms: Enhancer of zeste homolog 2, ENX 1, EZH1, EZH2, KMT6, Lysine N methyltransferase 6
Observed MW: 90-102 kDa
UniprotID : Q15910

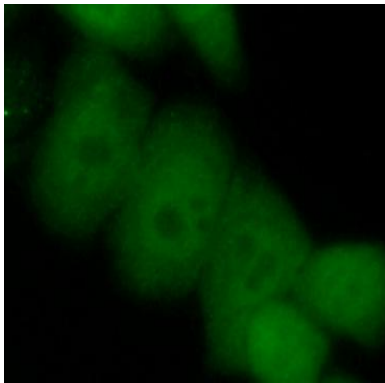
Application

Reactivity: Human, Mouse, Rat

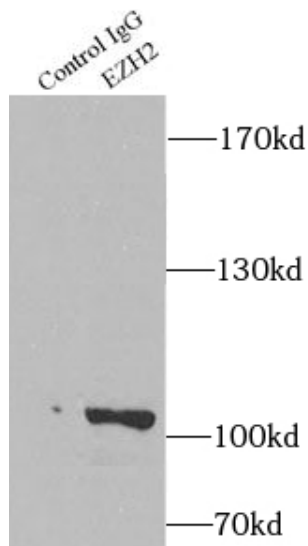
Tested Application: ELISA, WB, IP, IF

Recommended dilution: WB: 1:1000-1:4000; IP: 1:500-1:3000; IF: 1:20-1:200

Image:



Immunofluorescent analysis of (10% Formaldehyde) fixed HepG2 cells using FNab02918 (EZH2 antibody) at dilution of 1:50 and Alexa Fluor 488-conjugated Goat Anti-Rabbit IgG(H+L)



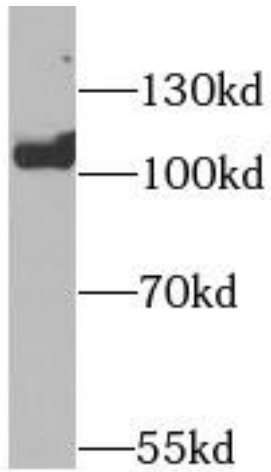
IP Result of anti-EZH2 (IP: FNab02918, 4ug; Detection: FNab02918 1:1000) with HepG2 cells lysate 4000ug.

Wuhan Fine Biotech Co., Ltd.

B9 Bld, High-Tech Medical Devices Park, No. 818 GaoxinAve. East Lake High-Tech Development Zone. Wuhan, Hubei, China(430206)

Tel : (0086)027-87384275

Fax: (0086)027-87800889 www.fn-test.com



HT-29 cells were subjected to SDS PAGE followed by western blot with FNab02918(EZH2 antibody) at dilution of 1:2000