

anti- ERP29 antibody

Product Information

Catalog No.:	FNab02857
Size:	100µg
Form:	liquid
Purification:	Immunogen affinity purified
Purity:	≥95% as determined by SDS-PAGE
Host:	Rabbit
Clonality:	polyclonal
Clone ID:	None
IsoType:	IgG
Storage:	PBS with 0.02% sodium azide and 50% glycerol pH 7.3, -20°C for 12 months (Avoid repeated freeze / thaw cycles.)

Background

Does not seem to be a disulfide isomerase. Plays an important role in the processing of secretory proteins within the endoplasmic reticulum(ER), possibly by participating in the folding of proteins in the ER.

Immunogen information

Immunogen:	endoplasmic reticulum protein 29
Synonyms:	C12orf8, ERP28
Observed MW:	29 kDa
UniprotID :	P30040

Application

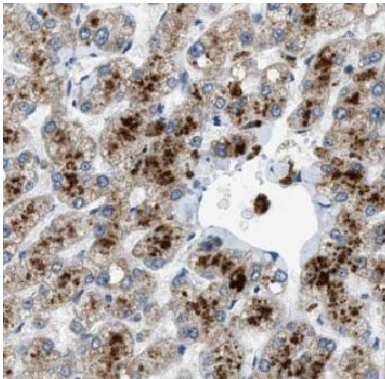
Reactivity:	Human, Mouse, Rat
Tested Application:	ELISA, WB, IHC, IF
Recommended dilution:	WB: 1:500-1:2000; IHC: 1:20-1:200; IF: 1:20-1:200
Image:	

Wuhan Fine Biotech Co., Ltd.

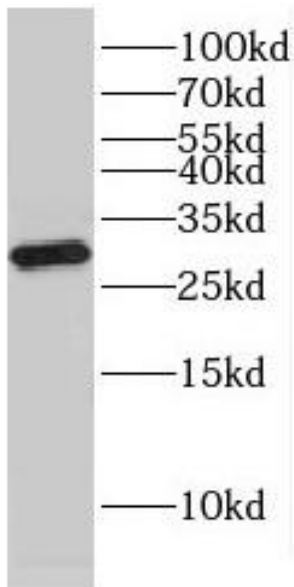
B9 Bld, High-Tech Medical Devices Park, No. 818 GaoxinAve. East Lake High-Tech Development Zone. Wuhan, Hubei, China(430206)

Tel : (0086)027-87384275

Fax: (0086)027-87800889 www.fn-test.com



Immunohistochemistry of paraffin-embedded human liver slide using FNab02857(ERP29 Antibody) at dilution of 1:50



mouse liver tissue were subjected to SDS PAGE followed by western blot with FNab02857(ERP29 Antibody) at dilution of 1:1000