

anti- ERO1LB antibody

Product Information

Catalog No.:	FNab02855
Size:	100µg
Form:	liquid
Purification:	Immunogen affinity purified
Purity:	≥95% as determined by SDS-PAGE
Host:	Rabbit
Clonality:	polyclonal
Clone ID:	None
IsoType:	IgG
Storage:	PBS with 0.02% sodium azide and 50% glycerol pH 7.3, -20°C for 12 months (Avoid repeated freeze / thaw cycles.)

Background

Endoplasmic reticulum oxidoreductases (Eros) are essential for the formation of disulfide bonds. Mammals express two related Ero proteins, Ero1L alpha and Ero1L beta. The two homologous proteins can form homodimers and mixed heterodimers. ERO1-L α and - β are highly expressed in organs with a high demand for secretion, consistent with their roles in oxidative folding of ER proteins.

Immunogen information

Immunogen:	ERO1-like beta
Synonyms:	ERO1 L beta, ERO1 like beta (<i>S. cerevisiae</i>), ERO1 like protein beta, ERO1LB, Oxidoreductin 1 L beta
Observed MW:	40~50 kDa
Uniprot ID :	Q86YB8

Application

Reactivity:	Human, Mouse, Rat
Tested Application:	ELISA, WB, IHC, IF

Wuhan Fine Biotech Co., Ltd.

B9 Bld, High-Tech Medical Devices Park, No. 818 Gaoxin Ave. East Lake High-Tech Development Zone. Wuhan, Hubei, China(430206)

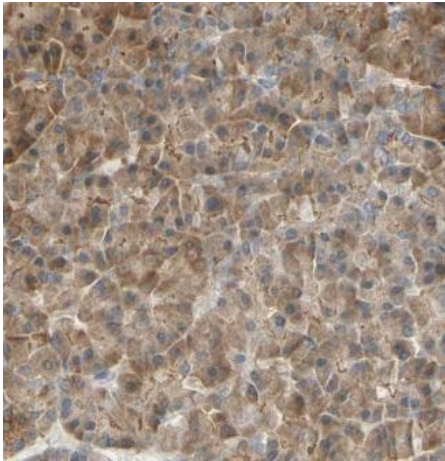
Tel : (0086)027-87384275

Fax: (0086)027-87800889

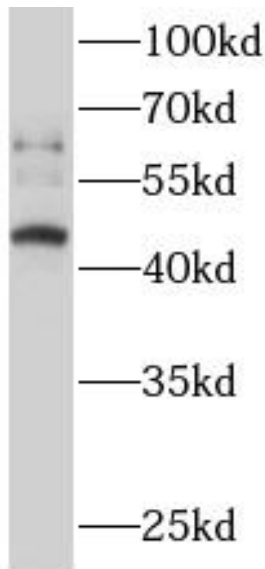
www.fn-test.com

Recommended dilution: WB: 1:500-1:2000; IHC: 1:20-1:200; IF: 1:50-1:500

Image:



Immunohistochemistry of paraffin-embedded human pancreas cancer using FNab02855(ERO1LB antibody) at dilution of 1:50



HeLa cells were subjected to SDS PAGE followed by western blot with FNab02855(ERO1LB antibody) at dilution of 1:1000

Wuhan Fine Biotech Co., Ltd.

B9 Bld, High-Tech Medical Devices Park, No. 818 Gaoxin Ave. East Lake High-Tech Development Zone. Wuhan, Hubei, China(430206)

Tel : (0086)027-87384275

Fax: (0086)027-87800889

www.fn-test.com