

anti- ERO1LB antibody

Product Information

Catalog No.:	FNab02854
Size:	100µg
Form:	liquid
Purification:	Immunogen affinity purified
Purity:	≥95% as determined by SDS-PAGE
Host:	Rabbit
Clonality:	polyclonal
Clone ID:	None
IsoType:	IgG
Storage:	PBS with 0.02% sodium azide and 50% glycerol pH 7.3, -20°C for 12 months (Avoid repeated freeze / thaw cycles.)

Background

This antibody has no cross reaction to ERO1L.

Immunogen information

Immunogen:	ERO1-like beta
Synonyms:	ERO1 L beta, ERO1 like beta (<i>S. cerevisiae</i>), ERO1 like protein beta, ERO1LB, Oxidoreductin 1 L beta
Observed MW:	55 kDa
Uniprot ID :	Q86YB8

Application

Reactivity:	Human, Mouse, Rat
Tested Application:	ELISA, WB, IHC
Recommended dilution:	WB: 1:500-1:2000; IHC: 1:20-1:200
Image:	

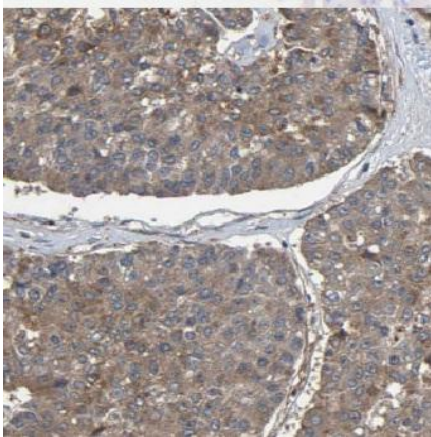
Wuhan Fine Biotech Co., Ltd.

B9 Bld, High-Tech Medical Devices Park, No. 818 Gaoxin Ave. East Lake High-Tech Development Zone. Wuhan, Hubei, China(430206)

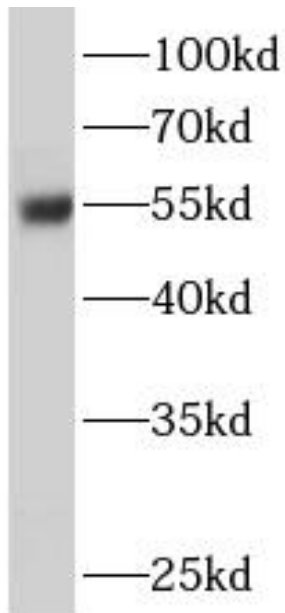
Tel : (0086)027-87384275

Fax: (0086)027-87800889

www.fn-test.com



Immunohistochemistry of paraffin-embedded human pancreas cancer using FNab02854(ERO1LB antibody) at dilution of 1:50



Rat brain were subjected to SDS PAGE followed by western blot with FNab02854(ERO1LB antibody) at dilution of 1:500