

anti- ERAB antibody

Product Information

Catalog No.:	FNab02824
Size:	100µg
Form:	liquid
Purification:	Protein A+G purification
Purity:	≥95% as determined by SDS-PAGE
Host:	Mouse
Clonality:	monoclonal
Clone ID:	6C4
IsoType:	IgG1
Storage:	PBS with 0.02% sodium azide and 50% glycerol pH 7.3, -20°C for 12 months (Avoid repeated freeze / thaw cycles.)

Background

Functions in mitochondrial tRNA maturation. Part of mitochondrial ribonuclease P, an enzyme composed of MRPP1/TRMT10C, MRPP2/HSD17B10 and MRPP3/KIAA0391, which cleaves tRNA molecules in their 5'-ends. Catalyzes the beta-oxidation at position 17 of androgens and estrogens and has 3-alpha-hydroxysteroid dehydrogenase activity with androsterone. Catalyzes the third step in the beta-oxidation of fatty acids. Carries out oxidative conversions of 7-alpha-OH and 7-beta-OH bile acids. Also exhibits 20-beta-OH and 21-OH dehydrogenase activities with C21 steroids. By interacting with intracellular amyloid-beta, it may contribute to the neuronal dysfunction associated with Alzheimer disease(AD).

Immunogen information

Immunogen:	hydroxysteroid(17-beta) dehydrogenase 10
Synonyms:	17 beta HSD 10, 17b HSD10, ABAD, CAMR, DUPXp11.22, ERAB, HADH2, HCD2, HSD17B10, MHBD, MRPP2, MRX17, MRX31, MRXS10, SCHAD, SDR5C1, Type II HADH, XH98G2
Observed MW:	27 kDa
Uniprot ID :	Q99714

Wuhan Fine Biotech Co., Ltd.

B9 Bld, High-Tech Medical Devices Park, No. 818 Gaoxin Ave. East Lake High-Tech Development Zone. Wuhan, Hubei, China(430206)

Tel : (0086)027-87384275

Fax: (0086)027-87800889

www.fn-test.com

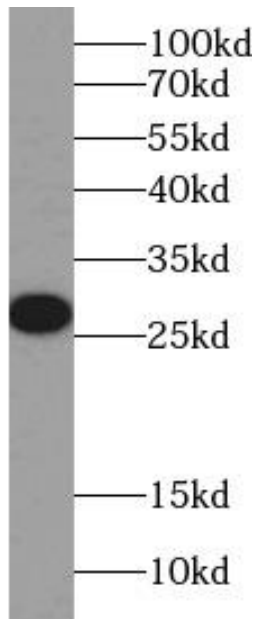
Application

Reactivity: Human, Mouse

Tested Application: ELISA, WB

Recommended dilution: WB: 1:1000-1:4000

Image:



HEK-293 cells were subjected to SDS PAGE followed by western blot with FNab02824(ERAB Antibody) at dilution of 1:2000

Wuhan Fine Biotech Co., Ltd.

B9 Bld, High-Tech Medical Devices Park, No. 818 Gaoxin Ave. East Lake High-Tech Development Zone. Wuhan, Hubei, China(430206)

Tel : (0086)027-87384275

Fax: (0086)027-87800889

www.fn-test.com