

## anti- EPHA6 antibody

### Product Information

Catalog No.:	FNab02803
Size:	100µg
Form:	liquid
Purification:	Immunogen affinity purified
Purity:	≥95% as determined by SDS-PAGE
Host:	Rabbit
Clonality:	polyclonal
Clone ID:	None
IsoType:	IgG
Storage:	PBS with 0.02% sodium azide and 50% glycerol pH 7.3, -20°C for 12 months (Avoid repeated freeze / thaw cycles.)

### Background

Receptor tyrosine kinase which binds promiscuously GPI-anchored ephrin-A family ligands residing on adjacent cells, leading to contact-dependent bidirectional signaling into neighboring cells. The signaling pathway downstream of the receptor is referred to as forward signaling while the signaling pathway downstream of the ephrin ligand is referred to as reverse signaling (By similarity).

### Immunogen information

Immunogen:	EPH receptor A6
Synonyms:	EHK2, HEK12
Observed MW:	None
Uniprot ID :	Q9UF33

### Application

Reactivity:	Human
Tested Application:	ELISA, IHC
Recommended dilution: IHC:	1:20-1:200

### Wuhan Fine Biotech Co., Ltd.

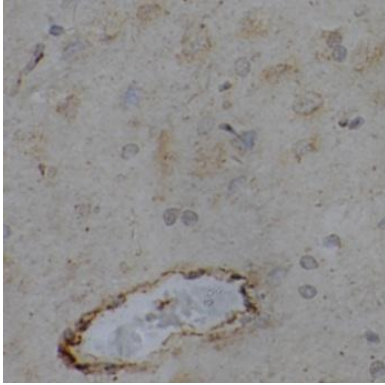
B9 Bld, High-Tech Medical Devices Park, No. 818 Gaoxin Ave. East Lake High-Tech Development Zone. Wuhan, Hubei, China (430206)

Tel : (0086)027-87384275

Fax: (0086)027-87800889

[www.fn-test.com](http://www.fn-test.com)

Image:



Immunohistochemistry of paraffin-embedded human brain tissue slide using FNab02803(EPHA6 Antibody) at dilution of 1:50