

anti- ELAVL2 antibody

Product Information

Catalog No.:	FNab02733
Size:	100µg
Form:	liquid
Purification:	Immunogen affinity purified
Purity:	≥95% as determined by SDS-PAGE
Host:	Rabbit
Clonality:	polyclonal
Clone ID:	None
IsoType:	IgG
Storage:	PBS with 0.02% sodium azide and 50% glycerol pH 7.3, -20°C for 12 months (Avoid repeated freeze / thaw cycles.)

Background

The protein encoded by this gene is a neural-specific RNA-binding protein that is known to bind to several 3' UTRs, including its own and also that of FOS and ID. The encoded protein may recognize a GAAA motif in the RNA. Three transcript variants encoding two different isoforms have been found for this gene.

Immunogen information

Immunogen:	ELAV (embryonic lethal, abnormal vision, Drosophila)-like 2 (Hu antigen B)
Synonyms:	ELAV like neuronal protein 1, ELAV like protein 2, ELAV2, ELAVL2, HEL N1, HELN1, Hu antigen B, HUB
Observed MW:	44 kDa
Uniprot ID :	Q12926

Application

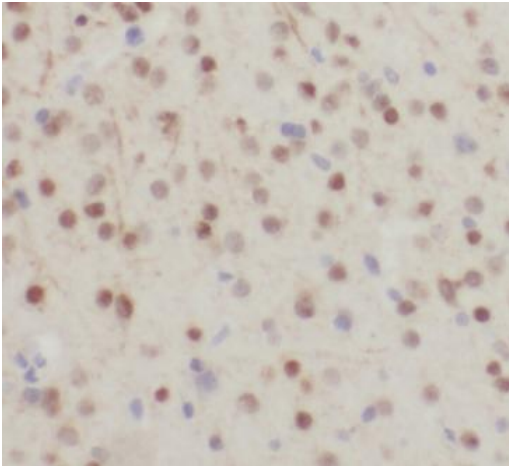
Reactivity:	Human, Mouse, Rat
Tested Application:	ELISA, WB, IHC

Wuhan Fine Biotech Co., Ltd.

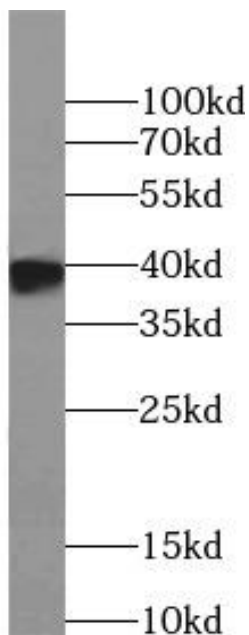
B9 Bld, High-Tech Medical Devices Park, No. 818 Gaoxin Ave. East Lake High-Tech Development Zone. Wuhan, Hubei, China(430206)

Recommended dilution: WB: 1:1000 - 1:2000; IHC: 1:50 - 1:200

Image:



Immunohistochemistry of paraffin-embedded human brain using FNab02733(ELAVL2 antibody) at dilution of 1:100



mouse cerebellum tissue were subjected to SDS PAGE followed by western blot with FNab02733(ELAVL2 antibody) at dilution of 1:1000

Wuhan Fine Biotech Co., Ltd.

B9 Bld, High-Tech Medical Devices Park, No. 818 Gaoxin Ave. East Lake High-Tech Development Zone. Wuhan, Hubei, China(430206)

Tel : (0086)027-87384275

Fax: (0086)027-87800889

www.fn-test.com