

anti- EEF1A2 antibody

Product Information

Catalog No.:	FNab02642
Size:	100µg
Form:	liquid
Purification:	Immunogen affinity purified
Purity:	≥95% as determined by SDS-PAGE
Host:	Rabbit
Clonality:	polyclonal
IsoType:	IgG
Storage:	PBS with 0.02% sodium azide and 50% glycerol pH 7.3 , -20°C for 24 months (Avoid repeated freeze / thaw cycles.)

Background

EEF1A2, also named as EEF1AL, STN and Statin-S1, belongs to the GTP-binding elongation factor family and EF-Tu/EF-1A subfamily. It promotes the GTP-dependent binding of aminoacyl-tRNA to the A-site of ribosomes during protein biosynthesis. EEF1A2 may be critical in the development of ovarian cancer. The MW of EEF1A2 is 50-53kd. This antibody can recognize both EEF1A1 and EEF1A2.

Immunogen information

Immunogen:	eukaryotic translation elongation factor 1 alpha 2
Synonyms:	eEF1A 2, EEF1A2, EEF1AL, EF 1 alpha 2, EF1A, Elongation factor 1 alpha 2, FLJ41696, HS1, Statin S1, STN, STNL
Observed MW:	50-53kd
Uniprot ID :	Q05639

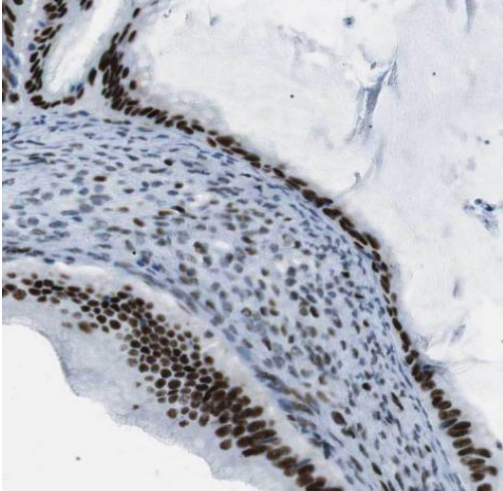
Application

Reactivity:	Human, Mouse, Rat
Tested Application:	ELISA, WB, IHC, IP
Recommended dilution:	WB: 1:500-1:5000; IP: 1:500-1:5000; IHC: 1:20-1:200

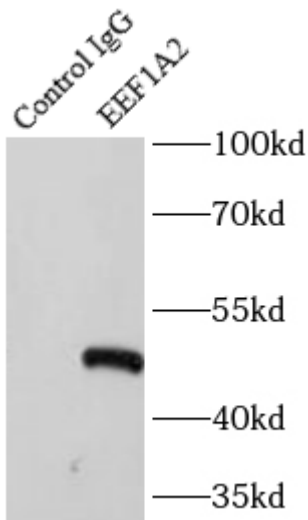
Wuhan Fine Biotech Co., Ltd.

B9 Bld, High-Tech Medical Devices Park, No. 818 Gaoxin Ave. East Lake High-Tech Development Zone. Wuhan, Hubei, China(430206)

Image:



Immunohistochemistry of paraffin-embedded human ovary tumor using FNab02642(EEF1A2 antibody) at dilution of 1:100



IP Result of anti-EEF1A2 (IP: FNab02642, 4ug; Detection: FNab02642 1:1000) with mouse brain tissue lysate 4000ug.

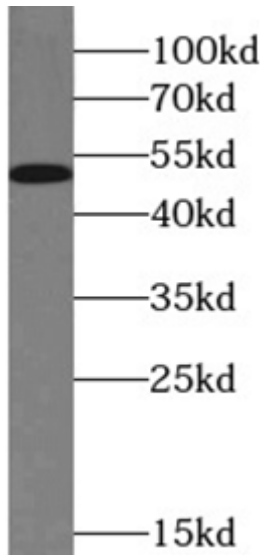
Wuhan Fine Biotech Co., Ltd.

B9 Bld, High-Tech Medical Devices Park, No. 818 Gaoxin Ave. East Lake High-Tech Development Zone. Wuhan, Hubei, China(430206)

Tel : (0086)027-87384275

Fax: (0086)027-87800889

www.fn-test.com



MCF7 cells were subjected to SDS PAGE followed by western blot with FNab02642(EEF1A2 antibody) at dilution of 1:500