

## anti- DCP1A antibody

### Product Information

|               |                                                                                                                 |
|---------------|-----------------------------------------------------------------------------------------------------------------|
| Catalog No.:  | FNab02269                                                                                                       |
| Size:         | 100µg                                                                                                           |
| Form:         | liquid                                                                                                          |
| Purification: | Immunogen affinity purified                                                                                     |
| Purity:       | ≥95% as determined by SDS-PAGE                                                                                  |
| Host:         | Rabbit                                                                                                          |
| Clonality:    | polyclonal                                                                                                      |
| Clone ID:     | None                                                                                                            |
| IsoType:      | IgG                                                                                                             |
| Storage:      | PBS with 0.02% sodium azide and 50% glycerol pH 7.3, -20°C for 12 months (Avoid repeated freeze / thaw cycles.) |

### Background

Necessary for the degradation of mRNAs, both in normal mRNA turnover and in nonsense-mediated mRNA decay. Removes the 7-methyl guanine cap structure from mRNA molecules, yielding a 5'-phosphorylated mRNA fragment and 7m-GDP. Contributes to the transactivation of target genes after stimulation by TGFβ1.

### Immunogen information

|              |                                                         |
|--------------|---------------------------------------------------------|
| Immunogen:   | DCP1 decapping enzyme homolog A( <i>S. cerevisiae</i> ) |
| Synonyms:    | SMIF                                                    |
| Observed MW: | 70 kDa                                                  |
| UniprotID :  | Q9NPI6                                                  |

### Application

|                       |                                                     |
|-----------------------|-----------------------------------------------------|
| Reactivity:           | Human, Mouse                                        |
| Tested Application:   | ELISA, WB, IHC, IP                                  |
| Recommended dilution: | WB: 1:500-1:2000; IP: 1:200-1:1000; IHC: 1:20-1:200 |

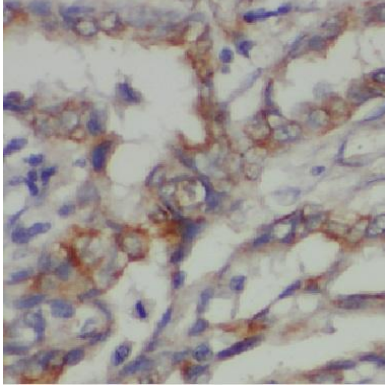
### Wuhan Fine Biotech Co., Ltd.

B9 Bld, High-Tech Medical Devices Park, No. 818 Gaoxin Ave. East Lake High-Tech Development Zone. Wuhan, Hubei, China (430206)

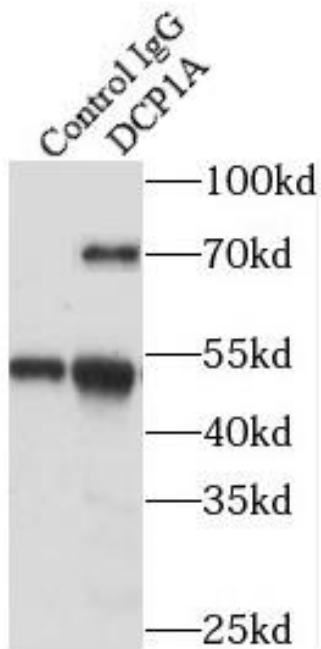
Tel : (0086)027-87384275

Fax: (0086)027-87800889 [www.fn-test.com](http://www.fn-test.com)

Image:



Immunohistochemistry of paraffin-embedded mouse lung tissue slide using FNab02269(DCP1A Antibody) at dilution of 1:50



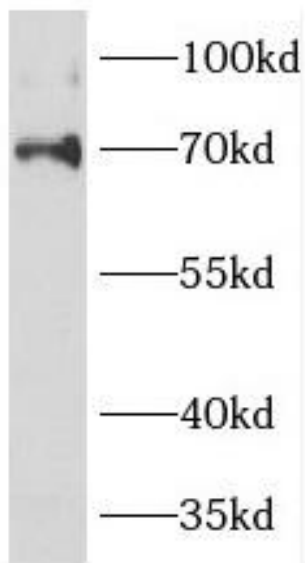
IP Result of anti-DCP1A (IP:FNab02269 4ug; Detection:FNab02269 1:3000) with mouse brain tissue lysate 3200ug.

**Wuhan Fine Biotech Co., Ltd.**

B9 Bld, High-Tech Medical Devices Park, No. 818 GaoxinAve.East Lake High-Tech Development Zone.Wuhan, Hubei, China(430206)

Tel : (0086)027-87384275

Fax: (0086)027-87800889 [www.fn-test.com](http://www.fn-test.com)



mouse lung tissue were subjected to SDS PAGE followed by western blot with FNab02269(DCP1A antibody) at dilution of 1:1000