

anti- Cytokeratin 8 antibody

Product Information

Catalog No.:	FNab02221
Size:	100µg
Form:	liquid
Purification:	Immunogen affinity purified
Purity:	≥95% as determined by SDS-PAGE
Host:	Rabbit
Clonality:	polyclonal
IsoType:	IgG
Storage:	PBS with 0.02% sodium azide and 50% glycerol pH 7.3 , -20°C for 24 months (Avoid repeated freeze / thaw cycles.)

Background

This gene is a member of the type II keratin family clustered on the long arm of chromosome 12. Type I and type II keratins heteropolymerize to form intermediate-sized filaments in the cytoplasm of epithelial cells. The product of this gene typically dimerizes with keratin 18 to form an intermediate filament in simple single-layered epithelial cells. This protein plays a role in maintaining cellular structural integrity and also functions in signal transduction and cellular differentiation. Mutations in this gene cause cryptogenic cirrhosis. Alternatively spliced transcript variants have been found for this gene.

Immunogen information

Immunogen:	keratin 8
Synonyms:	CARD2, CK 8, CK8, CYK8, Cytokeratin 8, K2C8, K8, keratin 8, KO, KRT8, Type II keratin Kb8
Observed MW:	53 kDa
Uniprot ID :	P05787

Application

Reactivity:	Human, Mouse
-------------	--------------

Wuhan Fine Biotech Co., Ltd.

B9 Bld, High-Tech Medical Devices Park, No. 818 Gaoxin Ave. East Lake High-Tech Development Zone. Wuhan, Hubei, China(430206)

Tel : (0086)027-87384275

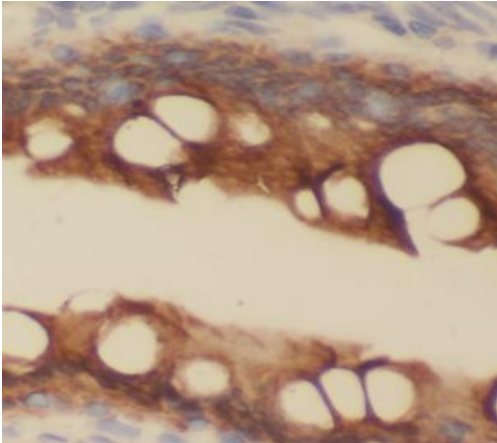
Fax: (0086)027-87800889

www.fn-test.com

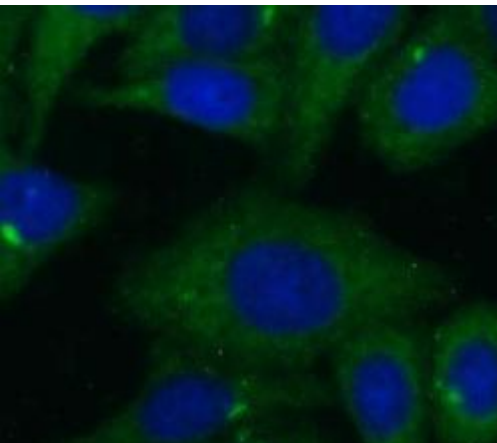
Tested Application: ELISA, WB, IF, IHC

Recommended dilution: WB: 1:500 - 1:2000; IHC: 1:50 - 1:200; IF: 1:50 - 1:200

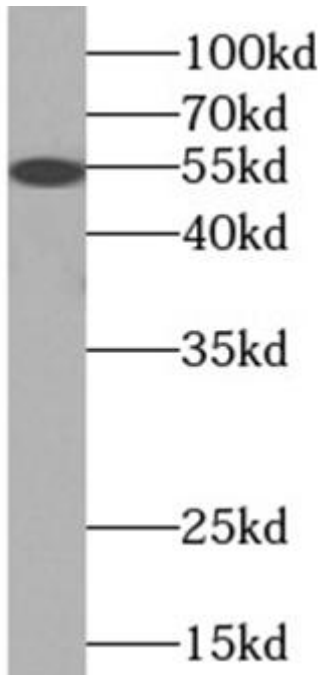
Image:



Immunohistochemistry of paraffin-embedded human colon tissue slide using FNab02221 (KRT8 Antibody) at dilution of 1:200



Immunofluorescent analysis of HepG2 cells using FNab02221 (KRT8 Antibody) at dilution of 1:50 and Alexa Fluor 488-conjugated AffiniPure Goat Anti-Rabbit IgG(H+L)



MCF7 cells were subjected to SDS PAGE followed by western blot with FNab02221(KRT8 antibody) at dilution of 1:1500