

## anti- Cytokeratin 19 antibody

### Product Information

|               |                                                                                                                  |
|---------------|------------------------------------------------------------------------------------------------------------------|
| Catalog No.:  | FNab02209                                                                                                        |
| Size:         | 100µg                                                                                                            |
| Form:         | liquid                                                                                                           |
| Purification: | Protein A+G purification                                                                                         |
| Purity:       | ≥95% as determined by SDS-PAGE                                                                                   |
| Host:         | Mouse                                                                                                            |
| Clonality:    | monoclonal                                                                                                       |
| Clone ID:     | 2F9                                                                                                              |
| IsoType:      | IgG2a                                                                                                            |
| Storage:      | PBS with 0.02% sodium azide and 50% glycerol pH 7.3 , -20°C for 24 months (Avoid repeated freeze / thaw cycles.) |

### Background

The keratins are intermediate filament proteins responsible for the structural integrity of epithelial cells. KRT19, one of type I keratins, is specifically expressed in the periderm, the transiently superficial layer that envelopes the developing epidermis. Due to its high sensitivity, KRT19 is the most used marker for detection of tumor cells disseminated in lymph nodes, peripheral blood, and bone marrow of breast cancer patients. This antibody, generated against full length KRT19 protein, also recognizes KRT17, another type I keratin homologous to KRT19. KRT17 is used as a marker for trauma.

### Immunogen information

|              |                                                           |
|--------------|-----------------------------------------------------------|
| Immunogen:   | keratin 19                                                |
| Synonyms:    | CK 19, CK19, Cytokeratin 19, K19, K1CS, keratin 19, KRT19 |
| Observed MW: | 44-50 kDa                                                 |
| Uniprot ID : | P08727                                                    |

### Application

|             |       |
|-------------|-------|
| Reactivity: | Human |
|-------------|-------|

### Wuhan Fine Biotech Co., Ltd.

B9 Bld, High-Tech Medical Devices Park, No. 818 Gaoxin Ave. East Lake High-Tech Development Zone. Wuhan, Hubei, China(430206)

Tel : (0086)027-87384275

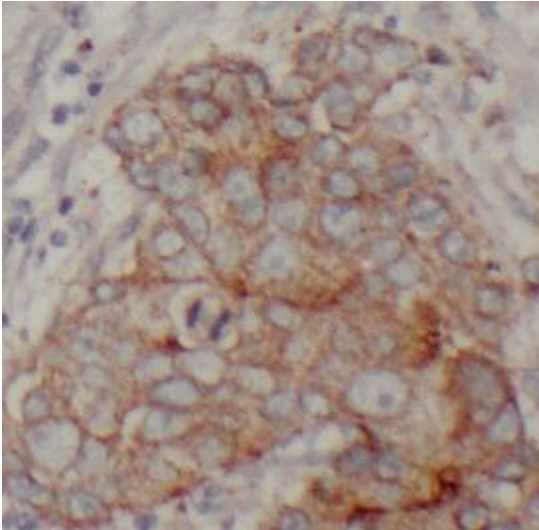
Fax: (0086)027-87800889

[www.fn-test.com](http://www.fn-test.com)

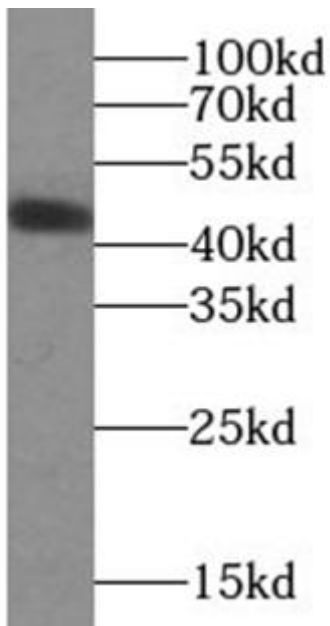
Tested Application: ELISA, WB, IHC

Recommended dilution: WB: 1:500-1:5000; IHC: 1:50-1:500

Image:



Immunohistochemistry of paraffin-embedded human breast cancer tissue slide using FNab02209(KRT19 Antibody) at dilution of 1:200. heat mediated antigen retrieved with Tris-EDTA buffer(pH9).



MCF-7 cells were subjected to SDS PAGE followed by western blot with FNab02209(KRT19 Antibody) at dilution of 1:1500

**Wuhan Fine Biotech Co., Ltd.**

B9 Bld, High-Tech Medical Devices Park, No. 818 Gaoxin Ave. East Lake High-Tech Development Zone. Wuhan, Hubei, China(430206)

Tel : (0086)027-87384275

Fax: (0086)027-87800889

[www.fn-test.com](http://www.fn-test.com)

**Wuhan Fine Biotech Co., Ltd.**

B9 Bld, High-Tech Medical Devices Park, No. 818 Gaoxin Ave. East Lake High-Tech Development Zone. Wuhan, Hubei, China(430206)

Tel : (0086)027-87384275

Fax: (0086)027-87800889

[www.fn-test.com](http://www.fn-test.com)