

anti- CYP51A1 antibody

Product Information

Catalog No.:	FNab02176
Size:	100µg
Form:	liquid
Purification:	Immunogen affinity purified
Purity:	≥95% as determined by SDS-PAGE
Host:	Rabbit
Clonality:	polyclonal
Clone ID:	None
IsoType:	IgG
Storage:	PBS with 0.02% sodium azide and 50% glycerol pH 7.3, -20°C for 12 months (Avoid repeated freeze / thaw cycles.)

Background

This gene encodes a member of the cytochrome P450 superfamily of enzymes. The cytochrome P450 proteins are monooxygenases which catalyze many reactions involved in drug metabolism and synthesis of cholesterol, steroids and other lipids. This endoplasmic reticulum protein participates in the synthesis of cholesterol by catalyzing the removal of the 14alpha-methyl group from lanosterol. Homologous genes are found in all three eukaryotic phyla, fungi, plants, and animals, suggesting that this is one of the oldest cytochrome P450 genes. Two transcript variants encoding different isoforms have been found for this gene.

Immunogen information

Immunogen:	cytochrome P450, family 51, subfamily A, polypeptide 1
Synonyms:	CYP51
Observed MW:	63 kDa
Uniprot ID :	Q16850

Application

Reactivity:	Human, Mouse, Rat
-------------	-------------------

Wuhan Fine Biotech Co., Ltd.

B9 Bld, High-Tech Medical Devices Park, No. 818 Gaoxin Ave. East Lake High-Tech Development Zone. Wuhan, Hubei, China(430206)

Tel : (0086)027-87384275

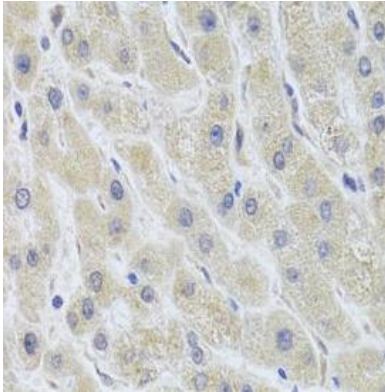
Fax: (0086)027-87800889

www.fn-test.com

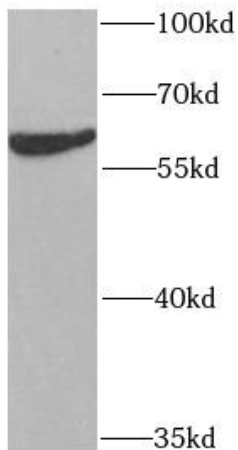
Tested Application: ELISA, WB, IHC

Recommended dilution: WB: 1:500 - 1:2000; IHC: 1:50 - 1:200

Image:



Immunohistochemistry of paraffin-embedded human liver using FNab02176(CYP51A1 antibody) at dilution of 1:100



mouse liver tissue were subjected to SDS PAGE followed by western blot with FNab02176(CYP51A1 antibody) at dilution of 1:1000

Wuhan Fine Biotech Co., Ltd.

B9 Bld, High-Tech Medical Devices Park, No. 818 Gaoxin Ave. East Lake High-Tech Development Zone. Wuhan, Hubei, China(430206)

Tel : (0086)027-87384275

Fax: (0086)027-87800889

www.fn-test.com