

## anti- CYP1A2-Specific antibody

### Product Information

Catalog No.:	FNab02148
Size:	100µg
Form:	liquid
Purification:	Immunogen affinity purified
Purity:	≥95% as determined by SDS-PAGE
Host:	Rabbit
Clonality:	polyclonal
Clone ID:	None
IsoType:	IgG
Storage:	PBS with 0.02% sodium azide and 50% glycerol pH 7.3, -20°C for 12 months (Avoid repeated freeze / thaw cycles.)

### Immunogen information

Immunogen:	cytochrome P450, family 1, subfamily A, polypeptide 2
Synonyms:	CP12, CP1A2, CYP1A2, CYP1A2, Cytochrome P(3)450, Cytochrome P450 1A2, Cytochrome P450 4, Cytochrome P450 P3, P3 450, P450(PA)
Observed MW:	58 kDa
Uniprot ID :	P05177

### Application

Reactivity:	Human, Mouse, Rat
Tested Application:	ELISA, WB, IF, IP, IHC
Recommended dilution:	WB: 1:500-1:2000; IP: 1:200-1:1000; IHC: 1:100-1:400; IF: 1:10-1:100
Image:	

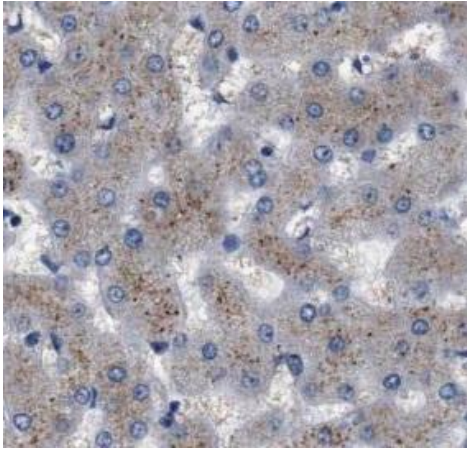
### Wuhan Fine Biotech Co., Ltd.

B9 Bld, High-Tech Medical Devices Park, No. 818 Gaoxin Ave. East Lake High-Tech Development Zone. Wuhan, Hubei, China(430206)

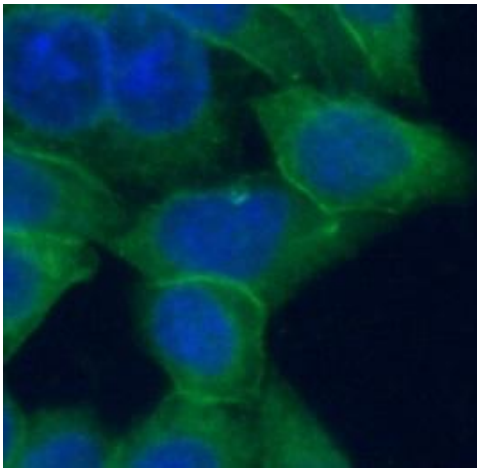
Tel : (0086)027-87384275

Fax: (0086)027-87800889

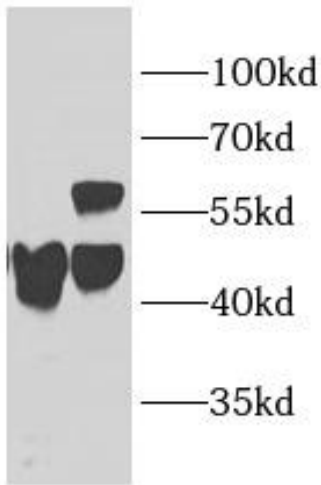
[www.fn-test.com](http://www.fn-test.com)



Immunohistochemistry of paraffin-embedded human liver tissue slide using FNab02148(CYP1A2-Specific Antibody) at dilution of 1:200

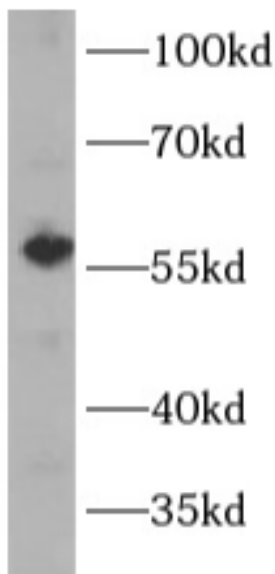


Immunofluorescent analysis of HeLa cells using FNab02148 (CYP1A2 antibody) at dilution of 1:25 and Rhodamine-conjugated Goat Anti-Rabbit IgG(H+L)



+ - Normal rabbit IgG  
- + CYP1A2 antibody

IP result of CYP1A2-Specific antibody (IP: FNab02148, 4μg; Detection: FNab02148 1:300) with mouse liver tissue 3000μg.



mouse liver tissue were subjected to SDS PAGE followed by western blot with FNab02148(CYP1A2-Specific antibody) at dilution of 1:1000