

## anti- Cyclophilin A antibody

### Product Information

Catalog No.:	FNab02134
Size:	100µg
Form:	liquid
Purification:	Immunogen affinity purified
Purity:	≥95% as determined by SDS-PAGE
Host:	Rabbit
Clonality:	polyclonal
Clone ID:	None
IsoType:	IgG
Storage:	PBS with 0.02% sodium azide and 50% glycerol pH 7.3, -20°C for 12 months (Avoid repeated freeze / thaw cycles.)

### Background

This gene encodes a member of the peptidyl-prolyl cis-trans isomerase (PPIase) family. PPIases catalyze the cis-trans isomerization of proline imidic peptide bonds in oligopeptides and accelerate the folding of proteins. The encoded protein is a cyclosporin binding-protein and may play a role in cyclosporin A-mediated immunosuppression. The protein can also interact with several HIV proteins, including p55 gag, Vpr, and capsid protein, and has been shown to be necessary for the formation of infectious HIV virions. Multiple pseudogenes that map to different chromosomes have been reported.

### Immunogen information

Immunogen:	peptidylprolyl isomerase A(cyclophilin A)
Synonyms:	Cyclophilin A, Cyclosporin A binding protein, CYPA, CYPH, PPIA, PPIase A, Rotamase A
Observed MW:	18 kDa
Uniprot ID :	P62937

### Application

#### Wuhan Fine Biotech Co., Ltd.

B9 Bld, High-Tech Medical Devices Park, No. 818 Gaoxin Ave. East Lake High-Tech Development Zone. Wuhan, Hubei, China(430206)

Tel : (0086)027-87384275

Fax: (0086)027-87800889

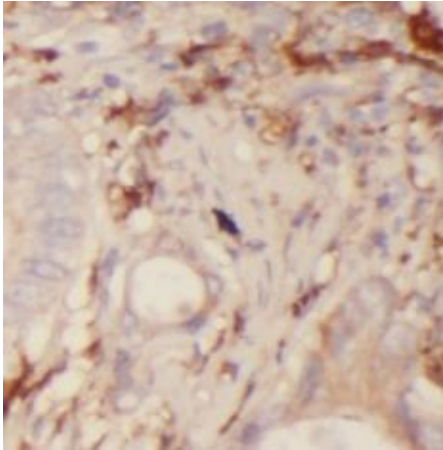
[www.fn-test.com](http://www.fn-test.com)

Reactivity: Human, Mouse, Rat

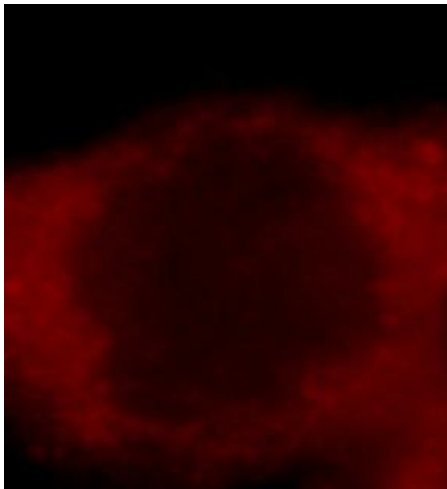
Tested Application: ELISA, WB, IHC, IF, FC

Recommended dilution: WB: 1:500-1:3000; IHC: 1:20-1:200; IF: 1:10-1:100

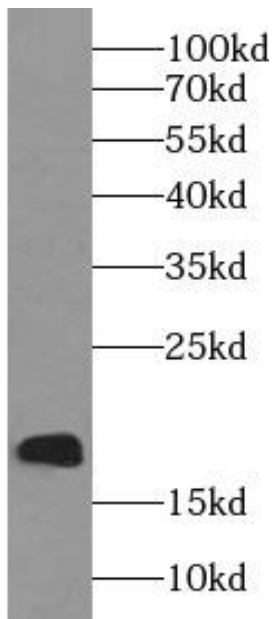
Image:



Immunohistochemistry of paraffin-embedded human colon cancer using FNab02134(CYPA antibody) at dilution of 1:200



Immunofluorescent analysis of HepG2 cells, using PPIA antibody FNab02134 at 1:25 dilution and Rhodamine-labeled goat anti-rabbit IgG (red).



K-562 cells were subjected to SDS PAGE followed by western blot with FNab02134(CYPA antibody) at dilution of 1:1500