

## anti- Cyclin B1 antibody

### Product Information

Catalog No.:	FNab02122
Size:	100µg
Form:	liquid
Purification:	Immunogen affinity purified
Purity:	≥95% as determined by SDS-PAGE
Host:	Rabbit
Clonality:	polyclonal
IsoType:	IgG
Storage:	PBS with 0.02% sodium azide and 50% glycerol pH 7.3, -20°C for 12 months (Avoid repeated freeze / thaw cycles.)

### Background

Cyclin B1 is a regulatory protein involved in mitosis. The gene product complexes with p34(cdc2) to form the maturation-promoting factor(MPF). Two alternative transcripts have been found, a constitutively expressed transcript and a cell cycle-regulated transcript, that is expressed predominantly during G2/M phase of the cell cycle. The different transcripts result from the use of alternate transcription initiation sites. The antibody is specific to CCNB1.

### Immunogen information

Immunogen:	cyclin B1
Synonyms:	CCNB, CCNB1, cyclin B1, G2/mitotic specific cyclin B1
Observed MW:	55 kDa
Uniprot ID :	P14635

### Application

Reactivity:	Human, Mouse, Rat
Tested Application:	ELISA, WB, IF, IHC, IP
Recommended dilution:	WB: 1:500-1:5000; IP: 1:200-1:2000; IHC: 1:20-1:200; IF: 1:20-1:200
Image:	

1

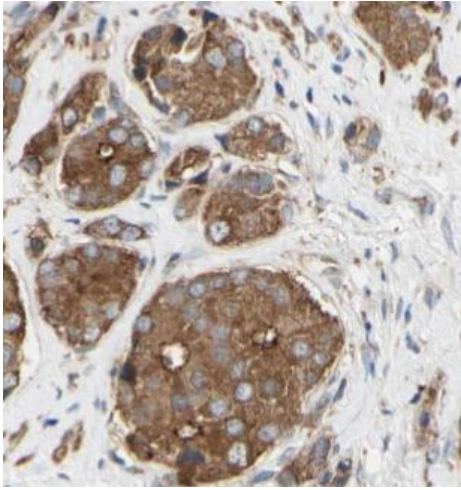
### Wuhan Fine Biotech Co., Ltd.

B9 Bld, High-Tech Medical Devices Park, No. 818 Gaoxin Ave. East Lake High-Tech Development Zone. Wuhan, Hubei, China(430206)

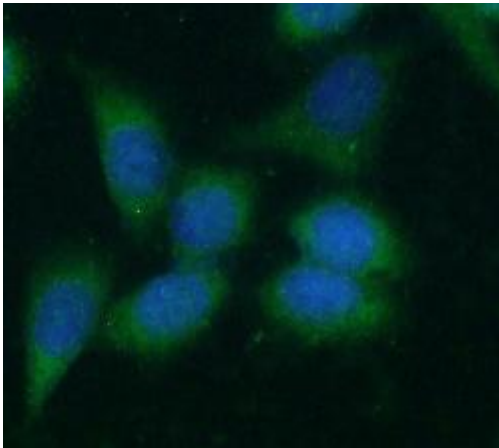
Tel : (0086)027-87384275

Fax: (0086)027-87800889

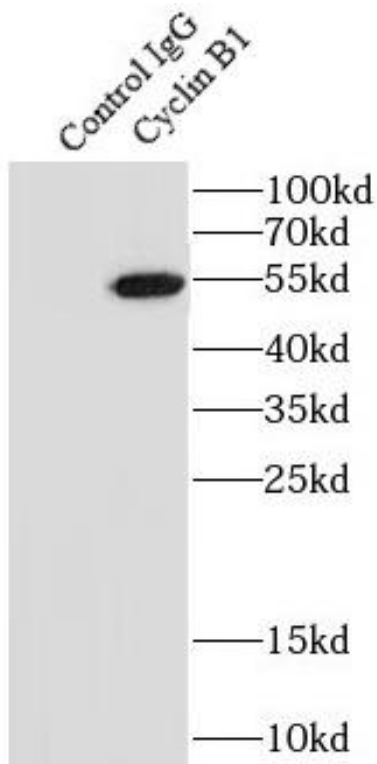
[www.fn-test.com](http://www.fn-test.com)



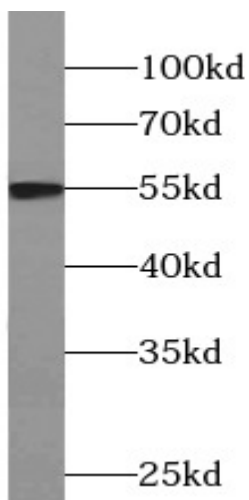
Immunohistochemistry of paraffin-embedded human prostate cancer tissue slide using FNab02122(Cyclin B1 Antibody) at dilution of 1:50. heat mediated antigen retrieved with Tris-EDTA buffer(pH9).



Immunofluorescent analysis of HeLa cells using FNab02122( Cyclin B1 Antibody) at dilution of 1:50 and Alexa Fluor 488-conjugated Goat Anti-Rabbit IgG(H+L)



IP Result of anti-Cyclin B1 (IP:FNab02122, 4ug;  
Detection:FNab02122 1:500) with HeLa cells  
lysate 1200ug.



HeLa cells were subjected to SDS PAGE followed  
by western blot with FNab02122(CCNB1  
antibody) at dilution of 1:500