

anti- CWC15 antibody

Product Information

Catalog No.:	FNab02085
Size:	100µg
Form:	liquid
Purification:	Immunogen affinity purified
Purity:	≥95% as determined by SDS-PAGE
Host:	Rabbit
Clonality:	polyclonal
Clone ID:	None
IsoType:	IgG
Storage:	PBS with 0.02% sodium azide and 50% glycerol pH 7.3, -20°C for 12 months (Avoid repeated freeze / thaw cycles.)

Background

Component of the PRP19-CDC5L complex that forms an integral part of the spliceosome and is required for activating pre-mRNA splicing.

Immunogen information

Immunogen:	CWC15 spliceosome-associated protein homolog(<i>S. cerevisiae</i>)
Synonyms:	C11orf5
Observed MW:	27-35 kDa
UniprotID :	Q9P013

Application

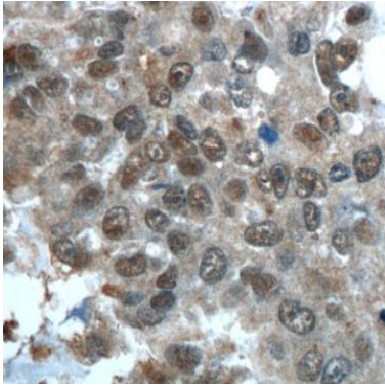
Reactivity:	Human, Mouse
Tested Application:	ELISA, WB, IHC, IP
Recommended dilution:	WB: 1:500-1:2000; IP: 1:200-1:1000; IHC: 1:20-1:200
Image:	

Wuhan Fine Biotech Co., Ltd.

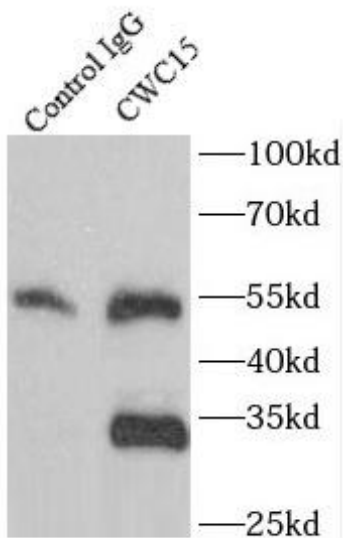
B9 Bld, High-Tech Medical Devices Park, No. 818 GaoxinAve. East Lake High-Tech Development Zone. Wuhan, Hubei, China(430206)

Tel : (0086)027-87384275

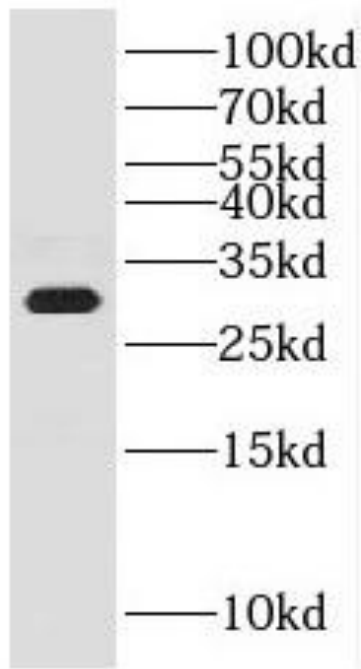
Fax: (0086)027-87800889 www.fn-test.com



Immunohistochemistry of paraffin-embedded human stomach tissue slide using FNab02085(CWC15 Antibody) at dilution of 1:50



IP Result of anti-CWC15 (IP:FNab02085, 3ug; Detection:FNab02085 1:600) with HeLa cells lysate 2800ug.



mouse liver tissue were subjected to SDS PAGE followed by western blot with FNab02085(CWC15 Antibody) at dilution of 1:600