

anti- CTAGE1 antibody

Product Information

| | |
|---------------|---|
| Catalog No.: | FNab02043 |
| Size: | 100µg |
| Form: | liquid |
| Purification: | Protein A+G purification |
| Purity: | ≥95% as determined by SDS-PAGE |
| Host: | Mouse |
| Clonality: | monoclonal |
| Clone ID: | 4F3 |
| IsoType: | IgG1 |
| Storage: | PBS with 0.02% sodium azide and 50% glycerol pH 7.3, -20°C for 12 months (Avoid repeated freeze / thaw cycles.) |

Immunogen information

| | |
|--------------|--|
| Immunogen: | cutaneous T-cell lymphoma-associated antigen 1 |
| Synonyms: | CTAGE2 |
| Observed MW: | 120 kDa |
| Uniprot ID : | Q96RT6 |

Application

| | |
|-----------------------|---|
| Reactivity: | Human |
| Tested Application: | ELISA, WB, IF, IHC |
| Recommended dilution: | WB: 1:500-1:1000; IHC: 1:20-1:200; IF: 1:10-1:100 |
| Image: | |

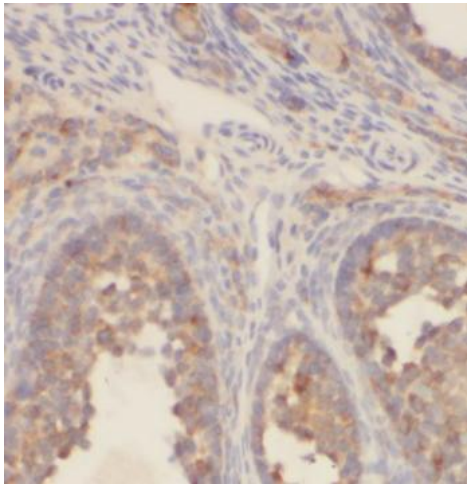
Wuhan Fine Biotech Co., Ltd.

B9 Bld, High-Tech Medical Devices Park, No. 818 Gaoxin Ave. East Lake High-Tech Development Zone. Wuhan, Hubei, China(430206)

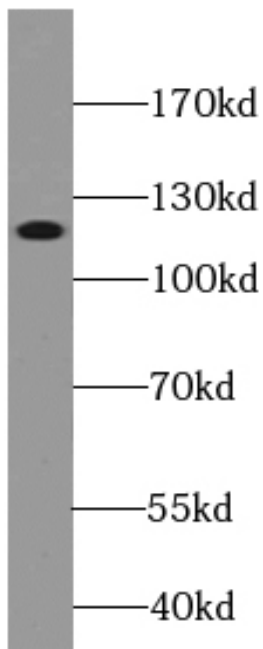
Tel : (0086)027-87384275

Fax: (0086)027-87800889

www.fn-test.com



Immunohistochemistry of paraffin-embedded human ovary tumor tissue slide using FNab02043(CTAGE1 Antibody) at dilution of 1:50



Jurkat cells were subjected to SDS PAGE followed by western blot with FNab02043(CTAGE1 antibody) at dilution of 1:500