

## anti- CSRP2 antibody

### Product Information

|               |   |
|---------------|---|
| Catalog No.:  | FNab02030   |
| Size:         | 100µg   |
| Form:         | liquid  |
| Purification: | Immunogen affinity purified   |
| Purity:       | ≥95% as determined by SDS-PAGE  |
| Host:         | Rabbit  |
| Clonality:    | polyclonal  |
| Clone ID:     | None  |
| IsoType:      | IgG   |
| Storage:      | PBS with 0.02% sodium azide and 50% glycerol pH 7.3, -20°C for 12 months (Avoid repeated freeze / thaw cycles.) |

### Background

Drastically down-regulated in response to PDGF-BB or cell injury, that promote smooth muscle cell proliferation and dedifferentiation. Seems to play a role in the development of the embryonic vascular system.

### Immunogen information

|              |                                     |
|--------------|-------------------------------------|
| Immunogen:   | cysteine and glycine-rich protein 2 |
| Synonyms:    | LMO5, SMLIM                         |
| Observed MW: | 21 kDa                              |
| UniprotID :  | Q16527                              |

### Application

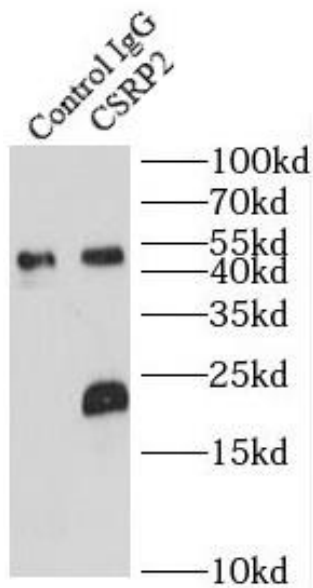
|                       |                                    |
|-----------------------|------------------------------------|
| Reactivity:           | Human, Mouse, Rat                  |
| Tested Application:   | ELISA, WB, IP                      |
| Recommended dilution: | WB: 1:500-1:2000; IP: 1:200-1:2000 |
| Image:                |                                    |

### Wuhan Fine Biotech Co., Ltd.

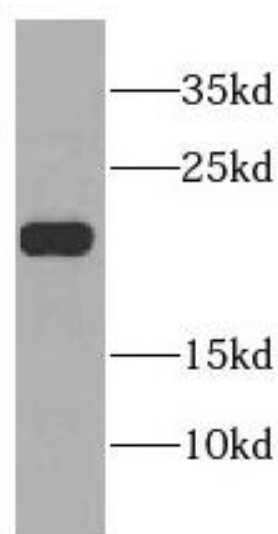
B9 Bld, High-Tech Medical Devices Park, No. 818 GaoxinAve.East Lake High-Tech Development Zone.Wuhan, Hubei, China(430206)

Tel : (0086)027-87384275

Fax: (0086)027-87800889 [www.fn-test.com](http://www.fn-test.com)



IP Result of anti-CSRP2 (IP:FNab02030, 4ug;  
Detection:FNab02030 1:1000) with mouse liver  
tissue lysate 4000ug.



mouse liver tissue were subjected to SDS PAGE  
followed by western blot with FNab02030(CSRP2  
antibody) at dilution of 1:1000