

## anti- CREST antibody

### Product Information

|               |   |
|---------------|---|
| Catalog No.:  | FNab01972   |
| Size:         | 100µg   |
| Form:         | liquid  |
| Purification: | Protein A+G purification  |
| Purity:       | ≥95% as determined by SDS-PAGE  |
| Host:         | Mouse   |
| Clonality:    | monoclonal  |
| Clone ID:     | 7A7   |
| IsoType:      | IgG1  |
| Storage:      | PBS with 0.02% sodium azide and 50% glycerol pH 7.3, -20°C for 12 months (Avoid repeated freeze / thaw cycles.) |

### Background

Transcriptional activator which is required for calcium-dependent dendritic growth and branching in cortical neurons. Recruits CREB-binding protein(CREBBP) to nuclear bodies. Component of the CREST-BRG1 complex, a multiprotein complex that regulates promoter activation by orchestrating a calcium-dependent release of a repressor complex and a recruitment of an activator complex. In resting neurons, transcription of the c-FOS promoter is inhibited by BRG1-dependent recruitment of a phospho-RB1-HDAC1 repressor complex. Upon calcium influx, RB1 is dephosphorylated by calcineurin, which leads to release of the repressor complex. At the same time, there is increased recruitment of CREBBP to the promoter by a CREST-dependent mechanism, which leads to transcriptional activation. The CREST-BRG1 complex also binds to the NR2B promoter, and activity-dependent induction of NR2B expression involves a release of HDAC1 and recruitment of CREBBP(By similarity).

### Immunogen information

|              |   |
|--------------|---|
| Immunogen:   | synovial sarcoma translocation gene on chromosome 18-like 1         |
| Synonyms:    | CREST, KIAA0693, LP2261, SS18 like protein 1, SS18L1, SYT homolog 1 |
| Observed MW: | 50 kDa  |
| Uniprot ID : | O75177  |

1

### Wuhan Fine Biotech Co., Ltd.

B9 Bld, High-Tech Medical Devices Park, No. 818 Gaoxin Ave. East Lake High-Tech Development Zone. Wuhan, Hubei, China(430206)

Tel : (0086)027-87384275

Fax: (0086)027-87800889

[www.fn-test.com](http://www.fn-test.com)

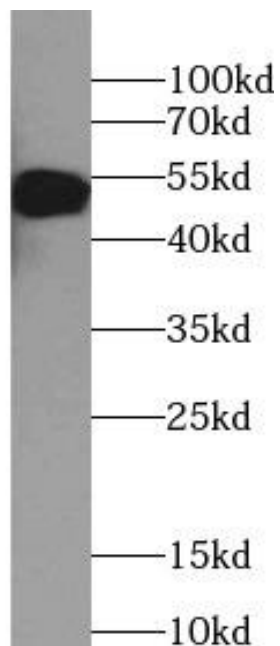
## Application

Reactivity: Human, Mouse, Rat

Tested Application: ELISA, WB

Recommended dilution: WB: 1:1000-1:6000

Image:



NIH/3T3 cells were subjected to SDS PAGE followed by western blot with FNab01972(CREST antibody) at dilution of 1:3000

### Wuhan Fine Biotech Co., Ltd.

B9 Bld, High-Tech Medical Devices Park, No. 818 Gaoxin Ave. East Lake High-Tech Development Zone. Wuhan, Hubei, China(430206)

Tel : (0086)027-87384275

Fax: (0086)027-87800889

[www.fn-test.com](http://www.fn-test.com)