

## anti- CREST antibody

### Product Information

Catalog No.:	FNab01971
Size:	100µg
Form:	liquid
Purification:	Immunogen affinity purified
Purity:	≥95% as determined by SDS-PAGE
Host:	Rabbit
Clonality:	polyclonal
Clone ID:	None
IsoType:	IgG
Storage:	PBS with 0.02% sodium azide and 50% glycerol pH 7.3, -20°C for 12 months (Avoid repeated freeze / thaw cycles.)

### Background

None

### Immunogen information

Immunogen:	synovial sarcoma translocation gene on chromosome 18-like 1
Synonyms:	CREST, KIAA0693, LP2261, SS18 like protein 1, SS18L1, SYT homolog 1
Observed MW:	55 kDa
UniprotID :	O75177

### Application

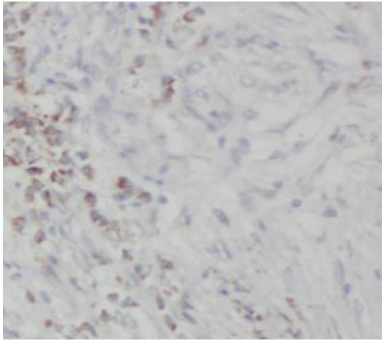
Reactivity:	Human, Mouse, Rat
Tested Application:	ELISA, IHC, IP, WB
Recommended dilution:	WB: 1:500-1:2000; IP: 1:150-1:600; IHC: 1:20-1:200; IF: 1:50-1:500
Image:	

### Wuhan Fine Biotech Co., Ltd.

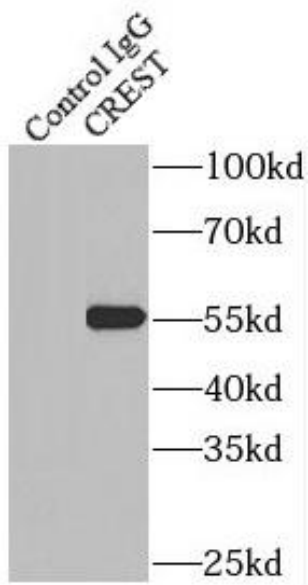
B9 Bld, High-Tech Medical Devices Park, No. 818 GaoxinAve. East Lake High-Tech Development Zone. Wuhan, Hubei, China(430206)

Tel : (0086)027-87384275

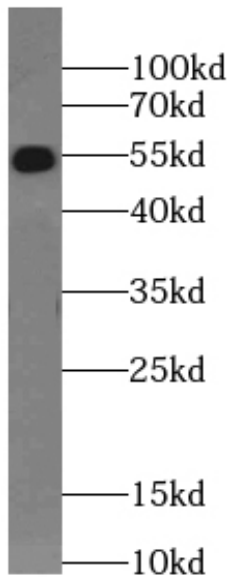
Fax: (0086)027-87800889 [www.fn-test.com](http://www.fn-test.com)



Immunohistochemistry of paraffin-embedded human breast cancer using FNab01971(CREST antibody) at dilution of 1:50



IP result of anti-CREST(IP:FNab01971, 4ug; Detection:FNab01971 1:300) with HeLa cells lysate 3000 ug



K-562 cells were subjected to SDS PAGE followed by western blot with FNab01971(CREST Antibody) at dilution of 1:1000