

## anti- CREBL2 antibody

### Product Information

Catalog No.:	FNab01967
Size:	100µg
Form:	liquid
Purification:	Immunogen affinity purified
Purity:	≥95% as determined by SDS-PAGE
Host:	Rabbit
Clonality:	polyclonal
Clone ID:	None
IsoType:	IgG
Storage:	PBS with 0.02% sodium azide and 50% glycerol pH 7.3, -20°C for 12 months (Avoid repeated freeze / thaw cycles.)

### Background

Probable regulator of CREB1 transcriptional activity which is involved in adipose cells differentiation. May also play a regulatory role in the cell cycle. Identification in a chromosomal region frequently deleted in various cancers suggests that it might act as a tumor suppressor.

### Immunogen information

Immunogen:	cAMP responsive element binding protein-like 2
Synonyms:	None
Observed MW:	17kd
UniprotID :	O60519

### Application

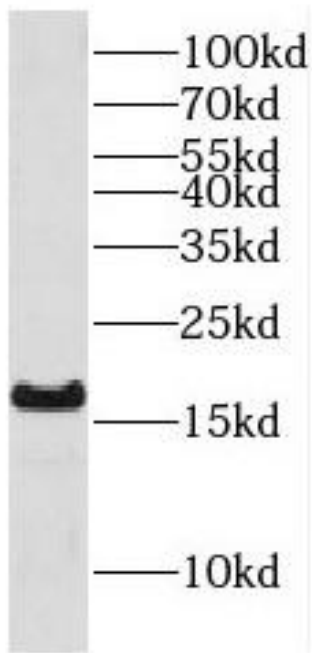
Reactivity:	Human, Mouse, Rat
Tested Application:	ELISA, WB
Recommended dilution: WB:	1:500-1:2000
Image:	

### Wuhan Fine Biotech Co., Ltd.

B9 Bld, High-Tech Medical Devices Park, No. 818 Gaoxin Ave. East Lake High-Tech Development Zone. Wuhan, Hubei, China (430206)

Tel : (0086)027-87384275

Fax: (0086)027-87800889 [www.fn-test.com](http://www.fn-test.com)



human liver tissue were subjected to SDS PAGE followed by western blot with FNab01967(CREBL2 antibody) at dilution of 1:500