

anti- CPT1A antibody

Product Information

Catalog No.:	FNab01943
Size:	100µg
Form:	liquid
Purification:	Protein A+G purification
Purity:	≥95% as determined by SDS-PAGE
Host:	Mouse
Clonality:	monoclonal
Clone ID:	3E2
IsoType:	IgG1
Storage:	PBS with 0.02% sodium azide and 50% glycerol pH 7.3, -20°C for 12 months (Avoid repeated freeze / thaw cycles.)

Background

Catalyzes the transfer of the acyl group of long-chain fatty acid-CoA conjugates onto carnitine, an essential step for the mitochondrial uptake of long-chain fatty acids and their subsequent beta-oxidation in the mitochondrion. Plays an important role in triglyceride metabolism.

Immunogen information

Immunogen:	carnitine palmitoyltransferase 1A(liver)
Synonyms:	CPT1
Observed MW:	86 kDa
Uniprot ID :	P50416

Application

Reactivity:	Human, Mouse, Rat
Tested Application:	ELISA, WB, IHC, IP
Recommended dilution:	WB: 1:500-1:1000; IHC: 1:20-1:200; IP: 1:500-1:1000
Image:	

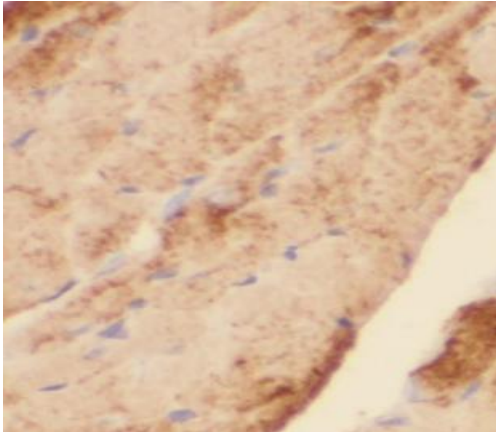
Wuhan Fine Biotech Co., Ltd.

B9 Bld, High-Tech Medical Devices Park, No. 818 Gaoxin Ave. East Lake High-Tech Development Zone. Wuhan, Hubei, China(430206)

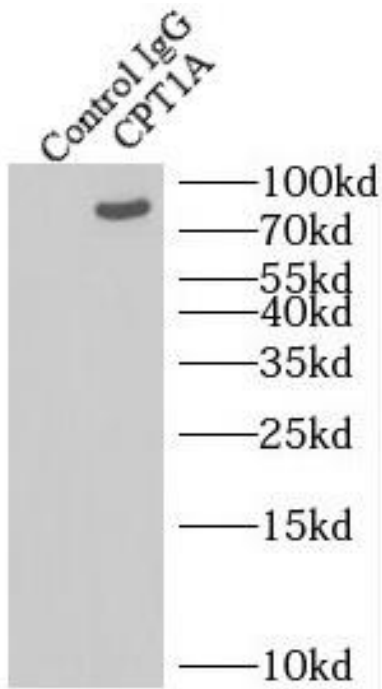
Tel : (0086)027-87384275

Fax: (0086)027-87800889

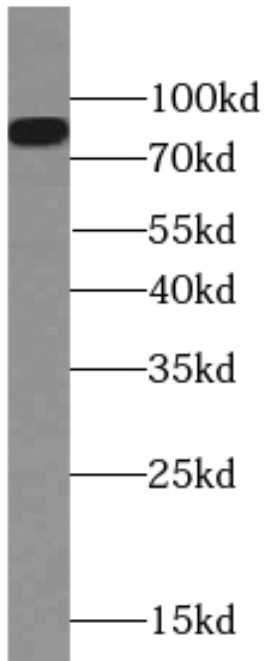
www.fn-test.com



Immunohistochemistry of paraffin-embedded human heart using FNab01943(CPT1A antibody) at dilution of 1:50



IP Result of anti-CPT1A (IP:FNab01943, 4ug; Detection:FNab01943 1:500) with MCF-7 cells lysate 1200ug.



L02 cells were subjected to SDS PAGE followed by western blot with FNab01943(CPT1A antibody) at dilution of 1:500