

## anti- CPNE8 antibody

### Product Information

Catalog No.:	FNab01931
Size:	100µg
Form:	liquid
Purification:	Immunogen affinity purified
Purity:	≥95% as determined by SDS-PAGE
Host:	Rabbit
Clonality:	polyclonal
Clone ID:	None
IsoType:	IgG
Storage:	PBS with 0.02% sodium azide and 50% glycerol pH 7.3, -20°C for 12 months (Avoid repeated freeze / thaw cycles.)

### Background

Probable calcium-dependent phospholipid-binding protein that may play a role in calcium-mediated intracellular processes.

### Immunogen information

Immunogen:	copine VIII
Synonyms:	None
Observed MW:	63 kDa
Uniprot ID :	Q86YQ8

### Application

Reactivity:	Human, Mouse, Rat
Tested Application:	ELISA, IHC
Recommended dilution:IHC:	1:20-1:200
Image:	

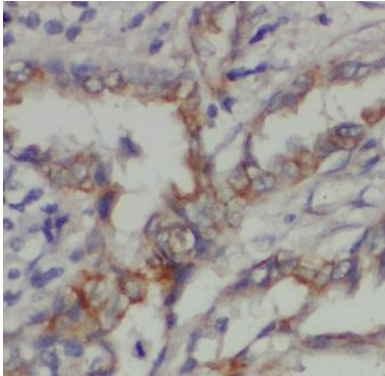
### Wuhan Fine Biotech Co., Ltd.

B9 Bld, High-Tech Medical Devices Park, No. 818 Gaoxin Ave. East Lake High-Tech Development Zone. Wuhan, Hubei, China(430206)

Tel : (0086)027-87384275

Fax: (0086)027-87800889

[www.fn-test.com](http://www.fn-test.com)



Immunohistochemistry of paraffin-embedded human lung using FNab01931(CPNE8 antibody) at dilution of 1:50