

anti- COTL1 antibody

Product Information

| | |
|---------------|---|
| Catalog No.: | FNab01889 |
| Size: | 100µg |
| Form: | liquid |
| Purification: | Protein A+G purification |
| Purity: | ≥95% as determined by SDS-PAGE |
| Host: | Mouse |
| Clonality: | monoclonal |
| Clone ID: | 6H5 |
| IsoType: | IgG1 |
| Storage: | PBS with 0.02% sodium azide and 50% glycerol pH 7.3, -20°C for 12 months (Avoid repeated freeze / thaw cycles.) |

Background

Binds to F-actin in a calcium-independent manner. Has no direct effect on actin depolymerization. Acts as a chaperone for ALOX5(5LO), influencing both its stability and activity in leukotrienes synthesis.

Immunogen information

| | |
|--------------|------------------------------------|
| Immunogen: | coactosin-like 1 |
| Synonyms: | CLP, Coactosin like protein, COTL1 |
| Observed MW: | 16 kDa |
| UniprotID : | Q14019 |

Application

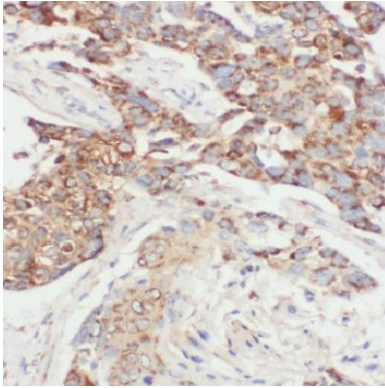
| | |
|-----------------------|--|
| Reactivity: | Human, Mouse |
| Tested Application: | ELISA, WB, IHC, IF |
| Recommended dilution: | WB: 1:1000-1:2000; IHC: 1:20-1:200; IF: 1:20-1:200 |
| Image: | |

Wuhan Fine Biotech Co., Ltd.

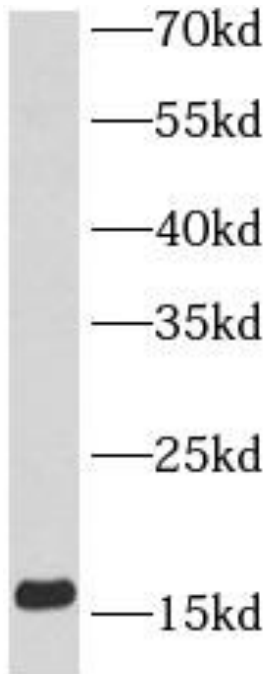
B9 Bld, High-Tech Medical Devices Park, No. 818 GaoxinAve.East Lake High-Tech Development Zone.Wuhan, Hubei, China(430206)

Tel :(0086)027-87384275

Fax: (0086)027-87800889 www.fn-test.com



Immunohistochemistry of paraffin-embedded human lung cancer tissue slide using FNab01889(COTL1 Antibody) at dilution of 1:50



fetal human brain tissue were subjected to SDS PAGE followed by western blot with FNab01889(COTL1 Antibody) at dilution of 1:2000