

anti- COLEC11 antibody

Product Information

Catalog No.:	FNab01835
Size:	100 μ g
Form:	liquid
Purification:	Immunogen affinity purified
Purity:	\geq 95% as determined by SDS-PAGE
Host:	Rabbit
IsoType:	IgG
Storage:	PBS with 0.02% sodium azide and 50% glycerol pH 7.3 , -20 $^{\circ}$ C for 24 months (Avoid repeated freeze / thaw cycles.)

Background

This gene encodes a member of the collectin family of C-type lectins that possess collagen-like sequences and carbohydrate recognition domains. Collectins are secreted proteins that play important roles in the innate immune system by binding to carbohydrate antigens on microorganisms, facilitating their recognition and removal. The encoded protein binds to multiple sugars with a preference for fucose and mannose. Mutations in this gene are a cause of 3MC syndrome-2. Alternatively spliced transcript variants encoding multiple isoforms have been observed for this gene.

Immunogen information

Immunogen:	collectin sub-family member 11
Synonyms:	CL K1, CL K1 I, CL K1 II, CL K1 IIa, CL K1 IIb, CLK1, COLEC11, Collectin 11, Collectin kidney protein 1, collectin sub family member 11
Calculated MW:	35 kDa
Uniprot ID :	Q9BWP8

Application

Specificity:	Human, Mouse, Rat; other species are not tested. Please decide the specificity by homology
Tested Application:	ELISA, WB, IHC
Recommended dilution:	WB: 1:200 - 1:2000; IHC: 1:50 - 1:100
Image:	



FineTest

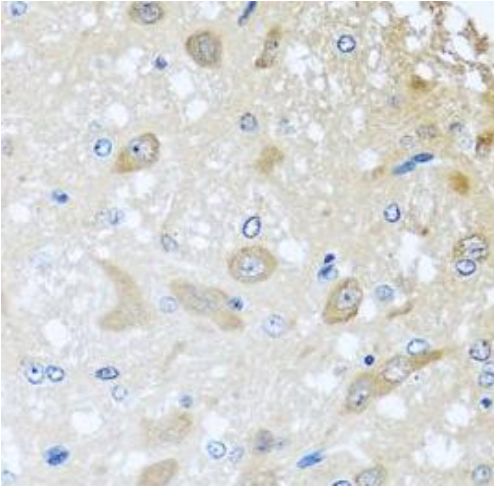
Wuhan Fine Biotech Co.,Ltd.

C6-323 Biolake, No. 666 Gaoxin Ave.

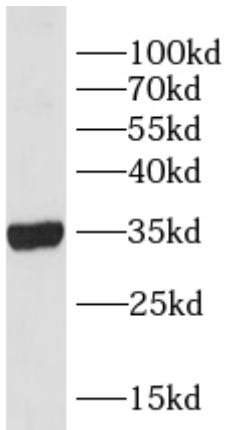
East Lake High-tech Development District

Wuhan City, Hubei, China (Zip code 430072)

Tel: 0086-027-87384275 Fax:0086-027-87800889



Immunohistochemistry of paraffin-embedded rat brain using FNab01835(COLEC11 antibody) at dilution of 1:100



MCF7 cells were subjected to SDS PAGE followed by western blot with FNab01835(COLEC11 antibody) at dilution of 1:1000