

anti- CLTB antibody

Product Information

Catalog No.:	FNab01778
Size:	100µg
Form:	liquid
Purification:	Immunogen affinity purified
Purity:	≥95% as determined by SDS-PAGE
Host:	Rabbit
Clonality:	polyclonal
Clone ID:	None
IsoType:	IgG
Storage:	PBS with 0.02% sodium azide and 50% glycerol pH 7.3, -20°C for 12 months (Avoid repeated freeze / thaw cycles.)

Background

Clathrin is the major protein of the polyhedral coat of coated pits and vesicles.

Immunogen information

Immunogen:	clathrin, light chain(Lcb)
Synonyms:	None
Observed MW:	32-38 kDa
UniprotID :	P09497

Application

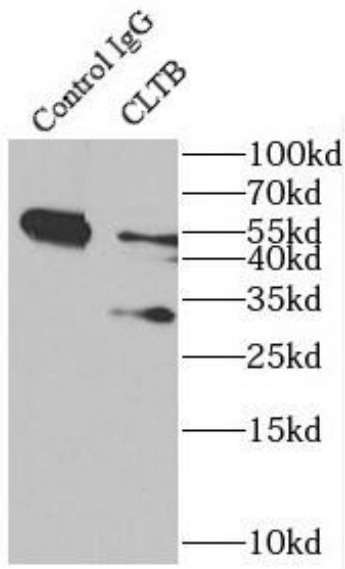
Reactivity:	Human, Mouse, Rat
Tested Application:	ELISA, WB, IP
Recommended dilution:	WB: 1:500-1:2000; IP: 1:200-1:2000
Image:	

Wuhan Fine Biotech Co., Ltd.

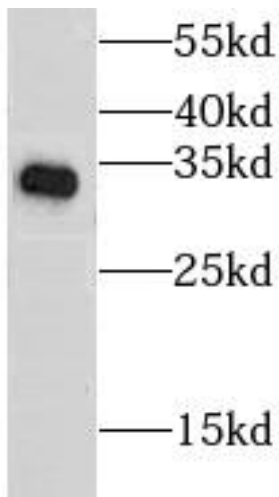
B9 Bld, High-Tech Medical Devices Park, No. 818 GaoxinAve. East Lake High-Tech Development Zone. Wuhan, Hubei, China(430206)

Tel : (0086)027-87384275

Fax: (0086)027-87800889 www.fn-test.com



IP Result of anti-CLTB (IP:FNab01778, 4ug;
Detection:FNab01778 1:500) with mouse brain
tissue lysate 4000ug.



mouse thymus tissue were subjected to SDS PAGE
followed by western blot with FNab01778 (CLTB
antibody) at dilution of 1:600