

anti- CLTA antibody

Product Information

Catalog No.:	FNab01777
Size:	100µg
Form:	liquid
Purification:	Immunogen affinity purified
Purity:	≥95% as determined by SDS-PAGE
Host:	Rabbit
Clonality:	polyclonal
Clone ID:	None
IsoType:	IgG
Storage:	PBS with 0.02% sodium azide and 50% glycerol pH 7.3, -20°C for 12 months (Avoid repeated freeze / thaw cycles.)

Background

Clathrin is the major protein of the polyhedral coat of coated pits and vesicles.

Immunogen information

Immunogen:	clathrin, light chain(Lca)
Synonyms:	Clathrin light chain A, clathrin, light chain (Lca), CLTA, LCA
Observed MW:	35-38 kDa
Uniprot ID :	P09496

Application

Reactivity:	Human, Mouse, Rat
Tested Application:	ELISA, WB, IHC, IP
Recommended dilution:	WB: 1:500-1:1000; IP: 1:500-1:1000; IHC: 1:50-1:500
Image:	

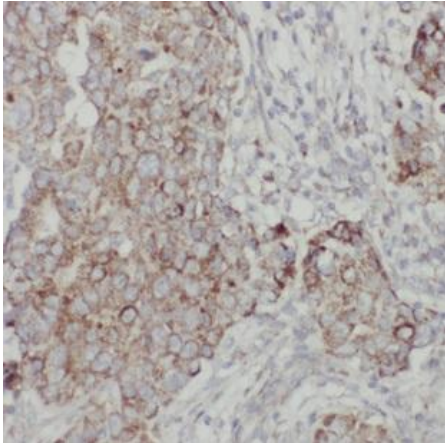
Wuhan Fine Biotech Co., Ltd.

B9 Bld, High-Tech Medical Devices Park, No. 818 Gaoxin Ave. East Lake High-Tech Development Zone. Wuhan, Hubei, China(430206)

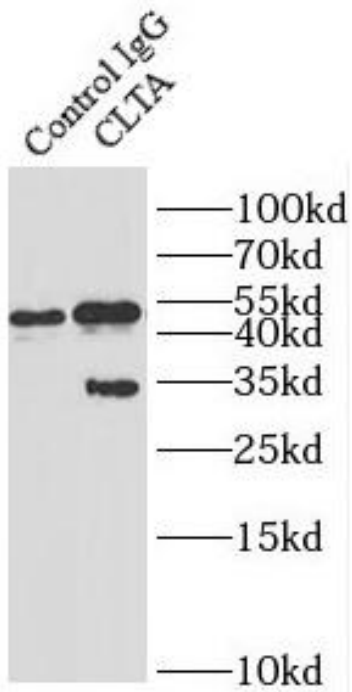
Tel : (0086)027-87384275

Fax: (0086)027-87800889

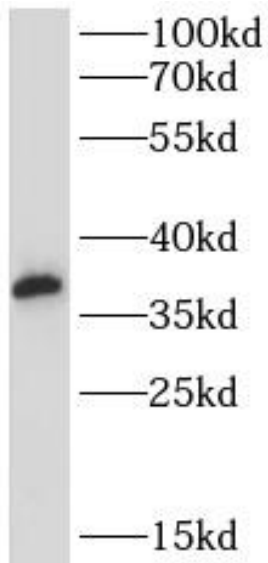
www.fn-test.com



Immunohistochemistry of paraffin-embedded human breast cancer using FNab01777 (CLTA antibody) at dilution of 1:100



IP Result of anti-CLTA (IP:FNab01777, 4ug; Detection:FNab01777 1:800) with mouse brain tissue lysate 4000ug.



mouse brain tissue were subjected to SDS PAGE followed by western blot with FNab01777(CLTA antibody) at dilution of 1:800