

## anti- CLIP1 antibody

### Product Information

Catalog No.:	FNab01763
Size:	100µg
Form:	liquid
Purification:	Immunogen affinity purified
Purity:	≥95% as determined by SDS-PAGE
Host:	Rabbit
Clonality:	polyclonal
Clone ID:	None
IsoType:	IgG
Storage:	PBS with 0.02% sodium azide and 50% glycerol pH 7.3, -20°C for 12 months (Avoid repeated freeze / thaw cycles.)

### Background

The protein encoded by this gene links endocytic vesicles to microtubules. This gene is highly expressed in Reed-Sternberg cells of Hodgkin disease. Several transcript variants encoding different isoforms have been found for this gene.

### Immunogen information

Immunogen:	CAP-GLY domain containing linker protein 1
Synonyms:	CYLN1, RSN
Observed MW:	162 kDa
Uniprot ID :	P30622

### Application

Reactivity:	Human, Mouse, Rat
Tested Application:	ELISA, WB, IHC
Recommended dilution:	WB: 1:500 - 1:2000; IHC: 1:50 - 1:200
Image:	

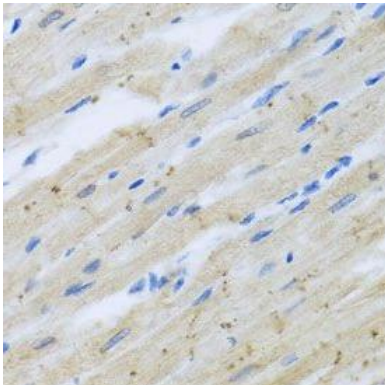
### Wuhan Fine Biotech Co., Ltd.

B9 Bld, High-Tech Medical Devices Park, No. 818 Gaoxin Ave. East Lake High-Tech Development Zone. Wuhan, Hubei, China(430206)

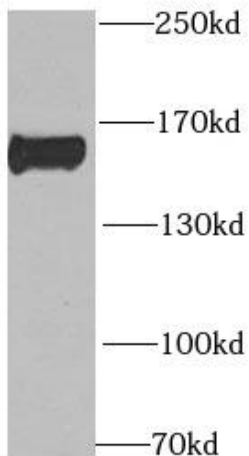
Tel : (0086)027-87384275

Fax: (0086)027-87800889

[www.fn-test.com](http://www.fn-test.com)



Immunohistochemistry of paraffin-embedded rat heart using FNab01763( CLIP1 Antibody) at dilution of 1:100



mouse brain tissue were subjected to SDS PAGE followed by western blot with FNab01763( CLIP1 Antibody) at dilution of 1:1000