

anti- CLEC11A antibody

Product Information

| | |
|---------------|---|
| Catalog No.: | FNab01746 |
| Size: | 100µg |
| Form: | liquid |
| Purification: | Protein A+G purification |
| Purity: | ≥95% as determined by SDS-PAGE |
| Host: | Mouse |
| Clonality: | monoclonal |
| Clone ID: | 8C9 |
| IsoType: | IgG2a |
| Storage: | PBS with 0.02% sodium azide and 50% glycerol pH 7.3, -20°C for 12 months (Avoid repeated freeze / thaw cycles.) |

Background

Stimulates the proliferation and differentiation of hematopoietic precursor cells from various lineages, including erythrocytes, lymphocytes, granulocytes and macrophages. Acts synergistically with other cytokines, including IL-3, GCSF, GMCSF and FLT3 ligand. Suppresses SCF-stimulated erythrocyte proliferation.

Immunogen information

| | |
|--------------|--|
| Immunogen: | C-type lectin domain family 11, member A |
| Synonyms: | CLECSF3, LSLCL, SCGF |
| Observed MW: | 36 kDa |
| Uniprot ID : | Q9Y240 |

Application

| | |
|-----------------------|-----------------------------------|
| Reactivity: | Human |
| Tested Application: | ELISA, IHC, WB |
| Recommended dilution: | WB: 1:500-1:2000; IHC: 1:20-1:200 |

Wuhan Fine Biotech Co., Ltd.

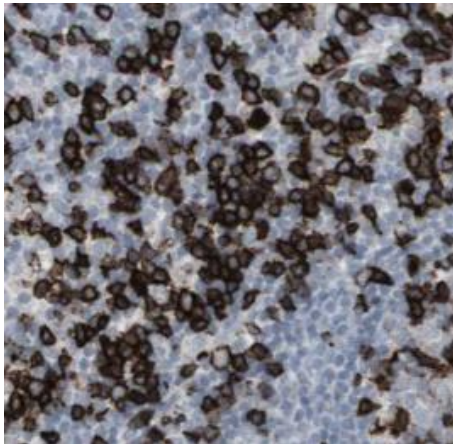
B9 Bld, High-Tech Medical Devices Park, No. 818 Gaoxin Ave. East Lake High-Tech Development Zone. Wuhan, Hubei, China(430206)

Tel : (0086)027-87384275

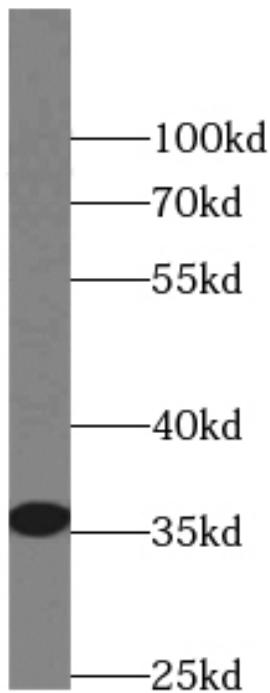
Fax: (0086)027-87800889

www.fn-test.com

Image:



Immunohistochemistry of paraffin-embedded human lymphoma tissue slide using FNab01746(CLEC11A Antibody) at dilution of 1:50



human heart tissue were subjected to SDS PAGE followed by western blot with FNab01746(CLEC11A Antibody) at dilution of 1:1000