

anti- Claudin 4-specific antibody

Product Information

Catalog No.:	FNab01739
Size:	100µg
Form:	liquid
Purification:	Immunogen affinity purified
Purity:	≥95% as determined by SDS-PAGE
Host:	Rabbit
Clonality:	polyclonal
Clone ID:	None
IsoType:	IgG
Storage:	PBS with 0.02% sodium azide and 50% glycerol pH 7.3, -20°C for 12 months (Avoid repeated freeze / thaw cycles.)

Background

Claudins are a family of proteins that are the most important components of the tight junctions, where they establish the paracellular barrier that controls the flow of molecules in the intercellular space between the cells of an epithelium. 23 claudins have been identified. They are small(20-27 kDa) proteins with very similar structure. They have four transmembrane domains, with the N-terminus and the C-terminus in the cytoplasm. This antibody is specifically against claudin 4.

Immunogen information

Immunogen:	claudin 4
Synonyms:	claudin 4, CLDN4, CPE R, CPE receptor, CPER, CPETR, CPETR1, hCPE R, WBSCR8
Observed MW:	22 kDa
Uniprot ID :	O14493

Application

Reactivity:	Human, Mouse, Rat
-------------	-------------------

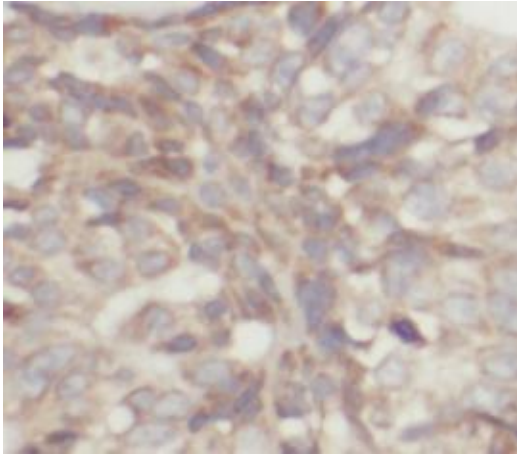
Wuhan Fine Biotech Co., Ltd.

B9 Bld, High-Tech Medical Devices Park, No. 818 Gaoxin Ave. East Lake High-Tech Development Zone. Wuhan, Hubei, China(430206)

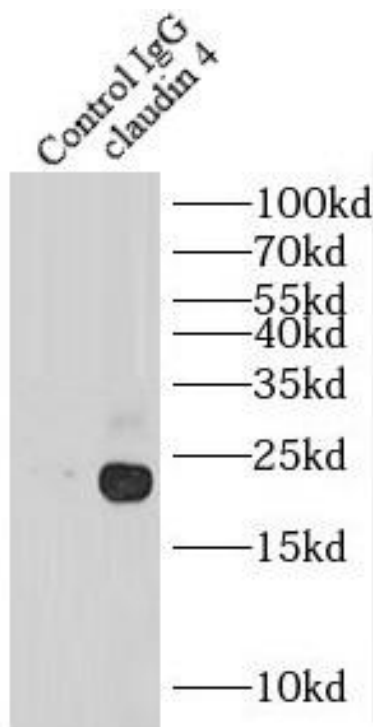
Tested Application: ELISA, WB, IHC, IP

Recommended dilution: WB: 1:200-1:2000; IP: 1:200-1:1000; IHC: 1:20-1:200

Image:



Immunohistochemistry of paraffin-embedded human breast cancer tissue slide using FNab01739(Claudin 4-specific Antibody) at dilution of 1:50



IP Result of anti-Claudin 4-specific (IP:FNab01739, 4ug; Detection:FNab01739 1:300) with human placenta tissue lysate 4400ug.

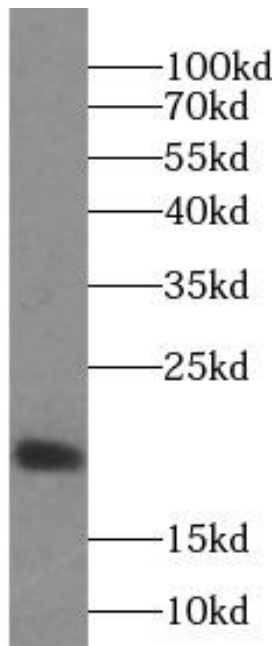
Wuhan Fine Biotech Co., Ltd.

B9 Bld, High-Tech Medical Devices Park, No. 818 Gaoxin Ave. East Lake High-Tech Development Zone. Wuhan, Hubei, China(430206)

Tel : (0086)027-87384275

Fax: (0086)027-87800889

www.fn-test.com



mouse small intestine tissue were subjected to SDS PAGE followed by western blot with FNab01739(CLDN4-specific antibody) at dilution of 1:500