

anti- CHCHD6 antibody

Product Information

Catalog No.:	FNab01638
Size:	100µg
Form:	liquid
Purification:	Immunogen affinity purified
Purity:	≥95% as determined by SDS-PAGE
Host:	Rabbit
Clonality:	polyclonal
Clone ID:	None
IsoType:	IgG
Storage:	PBS with 0.02% sodium azide and 50% glycerol pH 7.3, -20°C for 12 months (Avoid repeated freeze / thaw cycles.)

Background

Component of the MICOS complex, a large protein complex of the mitochondrial inner membrane that plays crucial roles in the maintenance of crista junctions, inner membrane architecture, and formation of contact sites to the outer membrane.

Immunogen information

Immunogen:	coiled-coil-helix-coiled-coil-helix domain containing 6
Synonyms:	CHCM1, MIC25
Observed MW:	26-29 kDa
UniprotID :	Q9BRQ6

Application

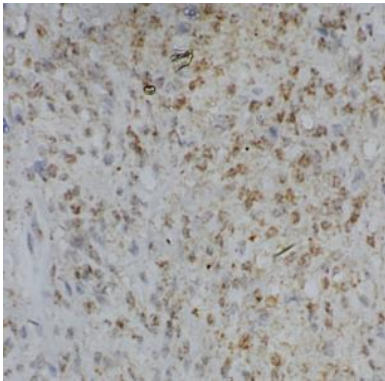
Reactivity:	Human
Tested Application:	ELISA, WB, IHC
Recommended dilution:	WB: 1:500-1:2000; IHC: 1:20-1:200
Image:	

Wuhan Fine Biotech Co., Ltd.

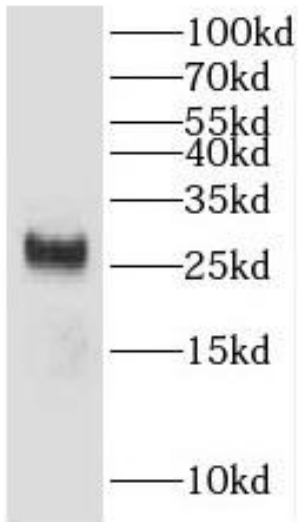
B9 Bld, High-Tech Medical Devices Park, No. 818 GaoxinAve. East Lake High-Tech Development Zone. Wuhan, Hubei, China(430206)

Tel : (0086)027-87384275

Fax: (0086)027-87800889 www.fn-test.com



Immunohistochemistry of paraffin-embedded human stomach using FNab01638(CHCHD6 antibody) at dilution of 1:100



HeLa cells were subjected to SDS PAGE followed by western blot with FNab01638(CHCHD6 antibody) at dilution of 1:500