

## anti- CEPT1 antibody

### Product Information

Catalog No.:	FNab01611
Size:	100µg
Form:	liquid
Purification:	Immunogen affinity purified
Purity:	≥95% as determined by SDS-PAGE
Host:	Rabbit
Clonality:	polyclonal
Clone ID:	None
IsoType:	IgG
Storage:	PBS with 0.02% sodium azide and 50% glycerol pH 7.3, -20°C for 12 months (Avoid repeated freeze / thaw cycles.)

### Background

Catalyzes both phosphatidylcholine and phosphatidylethanolamine biosynthesis from CDP-choline and CDP-ethanolamine, respectively. Involved in protein-dependent process of phospholipid transport to distribute phosphatidyl choline to the luminal surface. Has a higher cholinephosphotransferase activity than ethanolaminephosphotransferase activity.

### Immunogen information

Immunogen:	choline/ethanolamine phosphotransferase 1
Synonyms:	CEPT1, DKFZp313G0615, hCEPT1
Observed MW:	47 kDa
Uniprot ID :	Q9Y6K0

### Application

Reactivity:	Human, Mouse, Rat
Tested Application:	ELISA, IHC, IF
Recommended dilution:	IHC: 1:20-1:200; IF: 1:10-1:100

### Wuhan Fine Biotech Co., Ltd.

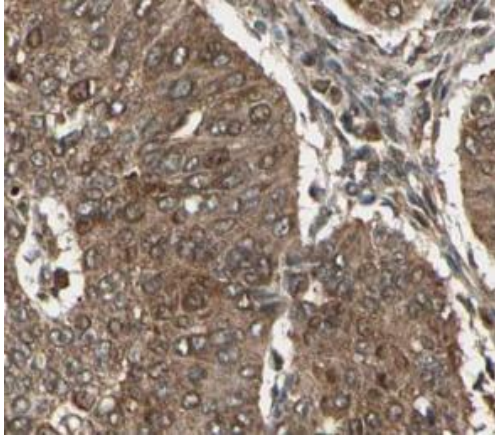
B9 Bld, High-Tech Medical Devices Park, No. 818 Gaoxin Ave. East Lake High-Tech Development Zone. Wuhan, Hubei, China(430206)

Tel : (0086)027-87384275

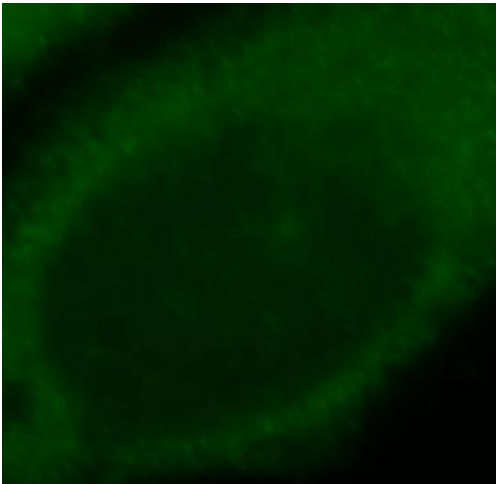
Fax: (0086)027-87800889

[www.fn-test.com](http://www.fn-test.com)

Image:



Immunohistochemical of paraffin-embedded human pancreas using FNab01611(CEPT1 antibody) at dilution of 1:50



Immunofluorescent analysis of HepG2 cells, using CEPT1 antibody FNab01611 at 1:25 dilution and FITC-goat anti-Rabbit IgG (green).