

anti- CEP290 antibody

Product Information

Catalog No.:	FNab01602
Size:	100µg
Form:	liquid
Purification:	Immunogen affinity purified
Purity:	≥95% as determined by SDS-PAGE
Host:	Rabbit
Clonality:	polyclonal
Clone ID:	None
IsoType:	IgG
Storage:	PBS with 0.02% sodium azide and 50% glycerol pH 7.3, -20°C for 12 months (Avoid repeated freeze / thaw cycles.)

Background

Studies in the Chlamydomonas model system has shown that the ciliary protein CEP290 is a critical component of these Y-link junctions. Additionally, numerous studies have demonstrated that CEP290's function is critical for IFT—in CEP290 knockdown experiments, many proteins that would normally localize to the cilium fail to do so, and cilium formation is disrupted or absent. Mutations in CEP290 are accountable for cases of nephronophthisis, Leber congenital amaurosis and Joubert syndrome. In IF analysis of HeLa cells, the white arrows show centrosome and cilium staining.

Immunogen information

Immunogen:	centrosomal protein 290kDa
Synonyms:	BBS14, KIAA0373, NPHP6,LCA10, MKS4, Nephrocystin 6, rd16, SLSN6, Tumor antigen se2 2
Observed MW:	290 kDa, 150-180 kDa, 80 kDa, 60 kDa
Uniprot ID :	O15078

Application

Wuhan Fine Biotech Co., Ltd.

B9 Bld, High-Tech Medical Devices Park, No. 818 Gaoxin Ave. East Lake High-Tech Development Zone. Wuhan, Hubei, China(430206)

Tel : (0086)027-87384275

Fax: (0086)027-87800889

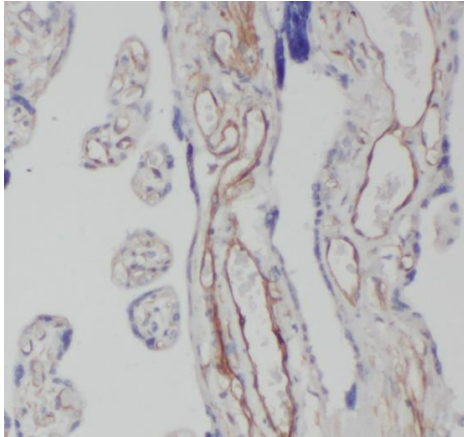
www.fn-test.com

Reactivity: Human, Mouse, Rat

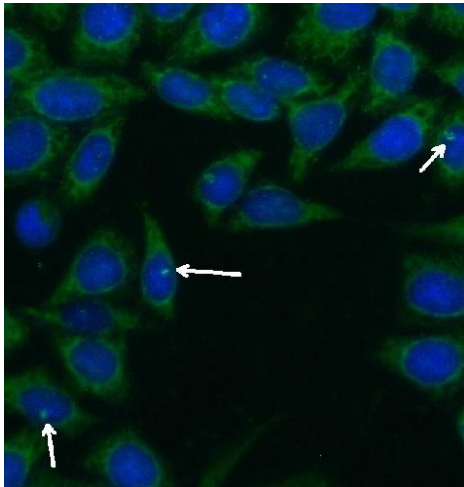
Tested Application: ELISA, WB, IP, IHC, IF

Recommended dilution: WB: 1:200-1:2000; IP: 1:500-1:5000; IHC: 1:20-1:200; IF: 1:50-1:500

Image:

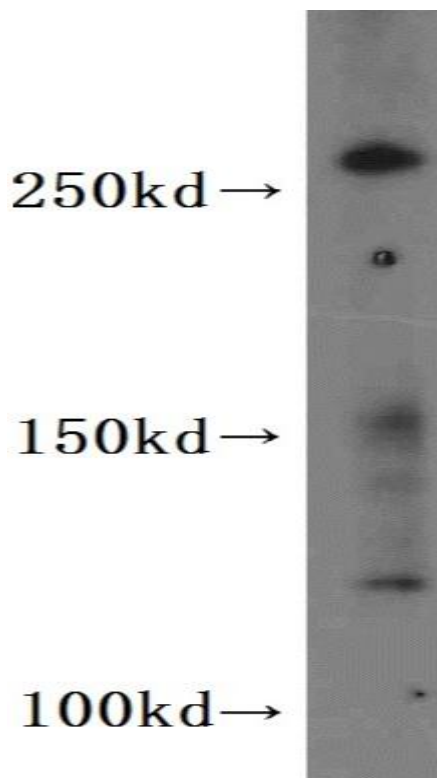
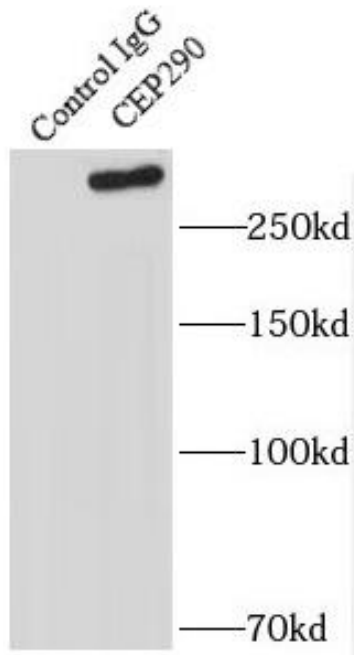


Immunohistochemistry of paraffin-embedded human placenta using FNab01602(CEP290 antibody) at dilution of 1:50



Immunofluorescent analysis of (-20°C Ethanol) fixed HeLa cells using FNab01602 (CEP290 Antibody) at dilution of 1:50 and Alexa Fluor 488-conjugated AffiniPure Goat Anti-Rabbit IgG(H+L)

IP result of anti-CEP290(FNab01602 for IP and Detection)with HeLa cells.



HeLa cells were subjected to SDS PAGE followed by western blot with FNab01602(CEP290 Antibody) at dilution of 1:600