

anti- CEP250 antibody

Product Information

Catalog No.:	FNab01601
Size:	100µg
Form:	liquid
Purification:	Immunogen affinity purified
Purity:	≥95% as determined by SDS-PAGE
Host:	Rabbit
Clonality:	polyclonal
Clone ID:	None
IsoType:	IgG
Storage:	PBS with 0.02% sodium azide and 50% glycerol pH 7.3, -20°C for 12 months (Avoid repeated freeze / thaw cycles.)

Background

Probably plays an important role in centrosome cohesion during interphase.

Immunogen information

Immunogen:	centrosomal protein 250kDa
Synonyms:	250 kDa centrosomal protein, C NAP1, Centrosomal protein 2, centrosomal protein 250kDa, CEP2, CEP250, CNAP1, C-NAP1
Observed MW:	250 kDa
Uniprot ID :	Q9BV73

Application

Reactivity:	Human, Mouse
Tested Application:	ELISA, WB, IHC, IF, IP
Recommended dilution:	WB: 1:200-1:2000; IP: 1:200-1:2000; IHC: 1:50-1:500; IF: 1:50-1:500
Image:	

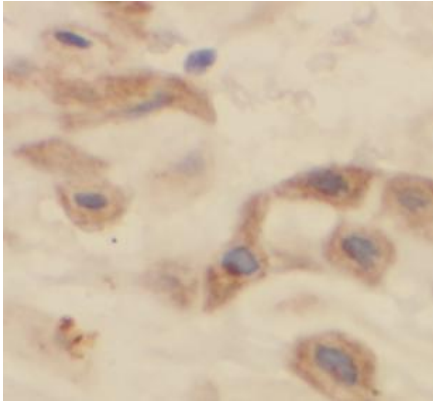
Wuhan Fine Biotech Co., Ltd.

B9 Bld, High-Tech Medical Devices Park, No. 818 Gaoxin Ave. East Lake High-Tech Development Zone. Wuhan, Hubei, China(430206)

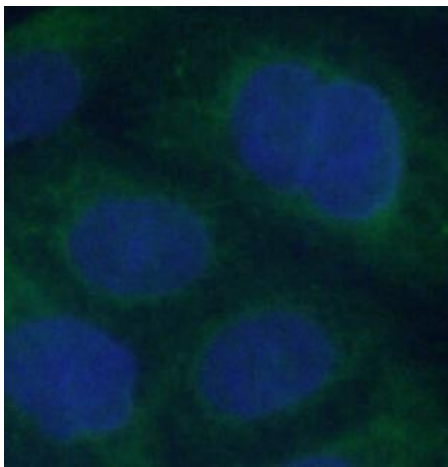
Tel : (0086)027-87384275

Fax: (0086)027-87800889

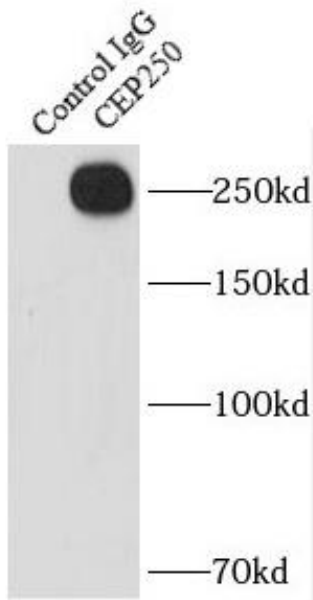
www.fn-test.com



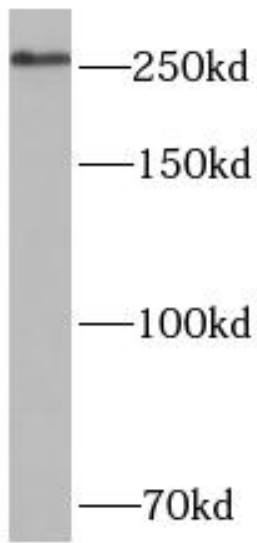
Immunohistochemistry of paraffin-embedded human placenta tissue slide using FNab01601(CEP250 Antibody) at dilution of 1:200



Immunofluorescent analysis of (-20°C Ethanol) fixed HeLa cells using FNab01601 (CEP250 antibody) at dilution of 1:50 and Alexa Fluor 488-conjugated Goat Anti-Rabbit IgG(H+L)



IP Result of anti-CEP250/CNAP1 (IP:FNab01601, 5ug; Detection:FNab01601 1:500) with HeLa cells lysate 1200ug.



HeLa cells were subjected to SDS PAGE followed by western blot with FNab01601(CEP250 antibody) at dilution of 1:500