

anti- CDC25B antibody

Product Information

Catalog No.:	FNab01522
Size:	100µg
Form:	liquid
Purification:	Immunogen affinity purified
Purity:	≥95% as determined by SDS-PAGE
Host:	Rabbit
Clonality:	polyclonal
Clone ID:	None
IsoType:	IgG
Storage:	PBS with 0.02% sodium azide and 50% glycerol pH 7.3, -20°C for 12 months (Avoid repeated freeze / thaw cycles.)

Background

CDC25B, also named as CDC25HU2, belongs to the MPI phosphatase family. It is a tyrosine protein phosphatase which functions as a dosage-dependent inducer of mitotic progression. CDC25B directly dephosphorylates CDK1 and stimulates its kinase activity. The three isoforms seem to have a different level of activity. In Jurkat cell, this antibody recognized 2 bands: 60kd(isoform 2, CDC25B2) and 70kd(isoform 4 of CDC25B).

Immunogen information

Immunogen:	cell division cycle 25 homolog B(S. pombe)
Synonyms:	CDC25B, CDC25HU2, M phase inducer phosphatase 2
Observed MW:	60-70 kDa
Uniprot ID :	P30305

Application

Reactivity:	Human, Mouse
Tested Application:	ELISA, WB, IHC, IP
Recommended dilution:	WB: 1:200-1:1000; IP: 1:200-1:1000; IHC: 1:20-1:200

1

Wuhan Fine Biotech Co., Ltd.

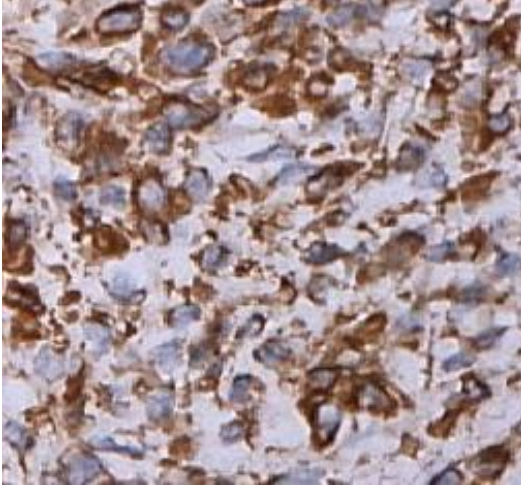
B9 Bld, High-Tech Medical Devices Park, No. 818 Gaoxin Ave. East Lake High-Tech Development Zone. Wuhan, Hubei, China(430206)

Tel : (0086)027-87384275

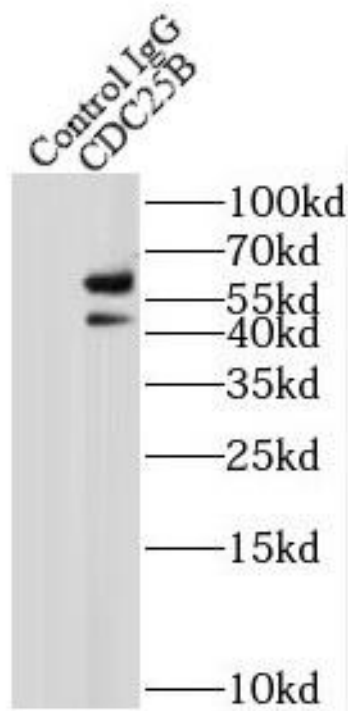
Fax: (0086)027-87800889

www.fn-test.com

Image:



Immunohistochemistry of paraffin-embedded human lymphoma using FNab01522(CDC25B antibody) at dilution of 1:100



IP Result of anti-CDC25B (IP:FNab01522, 4ug; Detection:FNab01522 1:300) with mouse liver tissue lysate 4000ug.

Wuhan Fine Biotech Co., Ltd.

B9 Bld, High-Tech Medical Devices Park, No. 818 Gaoxin Ave. East Lake High-Tech Development Zone. Wuhan, Hubei, China(430206)

Tel : (0086)027-87384275

Fax: (0086)027-87800889

www.fn-test.com

Jurkat cells were subjected to SDS PAGE followed by western blot with FNab01522(CDC25B antibody) at dilution of 1:300

