

anti- CDC14A antibody

Product Information

| | |
|---------------|---|
| Catalog No.: | FNab01515 |
| Size: | 100µg |
| Form: | liquid |
| Purification: | Immunogen affinity purified |
| Purity: | ≥95% as determined by SDS-PAGE |
| Host: | Rabbit |
| Clonality: | polyclonal |
| Clone ID: | None |
| IsoType: | IgG |
| Storage: | PBS with 0.02% sodium azide and 50% glycerol pH 7.3, -20°C for 12 months (Avoid repeated freeze / thaw cycles.) |

Background

Dual-specificity phosphatase. Required for centrosome separation and productive cytokinesis during cell division. Dephosphorylates SIRT2 around early anaphase. May dephosphorylate the APC subunit FZR1/CDH1, thereby promoting APC-FZR1 dependent degradation of mitotic cyclins and subsequent exit from mitosis.

Immunogen information

| | |
|--------------|---|
| Immunogen: | CDC14 cell division cycle 14 homolog A(S. cerevisiae) |
| Synonyms: | None |
| Observed MW: | 66kd |
| Uniprot ID : | Q9UNH5 |

Application

| | |
|--------------------------|-------------------|
| Reactivity: | Human, Mouse, Rat |
| Tested Application: | ELISA, WB |
| Recommended dilution:WB: | 1:500-1:2000 |

Wuhan Fine Biotech Co., Ltd.

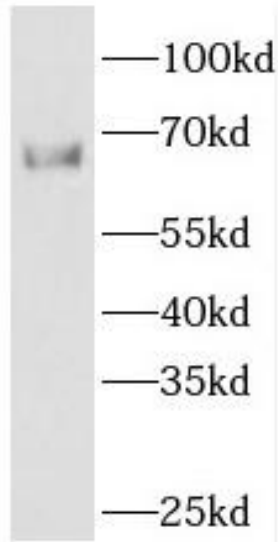
B9 Bld, High-Tech Medical Devices Park, No. 818 Gaoxin Ave. East Lake High-Tech Development Zone. Wuhan, Hubei, China(430206)

Tel : (0086)027-87384275

Fax: (0086)027-87800889

www.fn-test.com

Image:



human heart tissue were subjected to SDS PAGE followed by western blot with FNab01515(CDC14A antibody) at dilution of 1:500