

anti- Cd2ap antibody

Product Information

Catalog No.:	FNab01455
Size:	100µg
Form:	liquid
Purification:	Immunogen affinity purified
Purity:	≥95% as determined by SDS-PAGE
Host:	Rabbit
Clonality:	polyclonal
IsoType:	IgG
Storage:	PBS with 0.02% sodium azide and 50% glycerol pH 7.3, -20°C for 12 months (Avoid repeated freeze / thaw cycles.)

Background

Seems to act as an adapter protein between membrane proteins and the actin cytoskeleton. In collaboration with CBLC, modulates the rate of RET turnover and may act as regulatory checkpoint that limits the potency of GDNF on neuronal survival. Controls CBLC function, converting it from an inhibitor to a promoter of RET degradation. May play a role in receptor clustering and cytoskeletal polarity in the junction between T-cell and antigen-presenting cell. May anchor the podocyte slit diaphragm to the actin cytoskeleton in renal glomerulus. Also required for cytokinesis.

Immunogen information

Immunogen:	CD2-associated protein
Synonyms:	AL024079, C78928, CD2 associated protein, Cd2ap, METS 1
Observed MW:	70 kDa
Uniprot ID :	Q9Y5K6

Application

Reactivity:	Human, Mouse
Tested Application:	ELISA, WB, IF, IP

Wuhan Fine Biotech Co., Ltd.

B9 Bld, High-Tech Medical Devices Park, No. 818 Gaoxin Ave. East Lake High-Tech Development Zone. Wuhan, Hubei, China(430206)

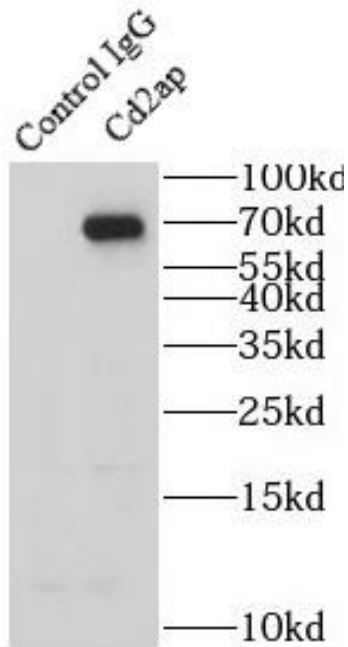
Tel : (0086)027-87384275

Fax: (0086)027-87800889

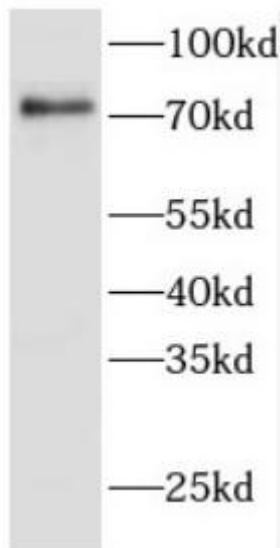
www.fn-test.com

Recommended dilution: WB: 1:500-1:2000; IP: 1:500-1:1000; IF: 1:10-1:100

Image:



IP Result of anti-Cd2ap (IP:FNab01455, 4ug;
Detection:FNab01455 1:2000) with mouse brain
tissue lysate 2560ug.



mouse kidney tissue were subjected to SDS PAGE
followed by western blot with FNab01455(Cd2ap
antibody) at dilution of 1:2000