

## anti- CCT6A-Specific antibody

### Product Information

Catalog No.:	FNab01401
Size:	100µg
Form:	liquid
Purification:	Immunogen affinity purified
Purity:	≥95% as determined by SDS-PAGE
Host:	Rabbit
Clonality:	polyclonal
Clone ID:	None
IsoType:	IgG
Storage:	PBS with 0.02% sodium azide and 50% glycerol pH 7.3, -20°C for 12 months (Avoid repeated freeze / thaw cycles.)

### Immunogen information

Immunogen:	chaperonin containing TCP1, subunit 6A(zeta 1)
Synonyms:	None
Observed MW:	58kd
Uniprot ID :	P40227

### Application

Reactivity:	Human, Mouse
Tested Application:	ELISA, WB
Recommended dilution:WB:	1:500-1:1000
Image:	

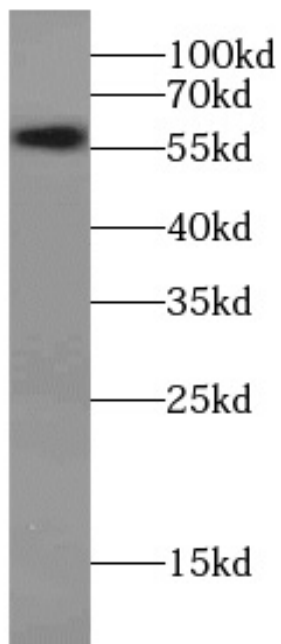
### Wuhan Fine Biotech Co., Ltd.

B9 Bld, High-Tech Medical Devices Park, No. 818 Gaoxin Ave. East Lake High-Tech Development Zone. Wuhan, Hubei, China(430206)

Tel : (0086)027-87384275

Fax: (0086)027-87800889

[www.fn-test.com](http://www.fn-test.com)



HeLa cells were subjected to SDS PAGE followed by western blot with FNab01401(CCT6A-Specific antibody) at dilution of 1:600