

anti- CCDC25 antibody

Product Information

| | |
|---------------|---|
| Catalog No.: | FNab01351 |
| Size: | 100µg |
| Form: | liquid |
| Purification: | Immunogen affinity purified |
| Purity: | ≥95% as determined by SDS-PAGE |
| Host: | Rabbit |
| Clonality: | polyclonal |
| IsoType: | IgG |
| Storage: | PBS with 0.02% sodium azide and 50% glycerol pH 7.3, -20°C for 12 months (Avoid repeated freeze / thaw cycles.) |

Immunogen information

| | |
|--------------|----------------------------------|
| Immunogen: | coiled-coil domain containing 25 |
| Synonyms: | None |
| Observed MW: | 24-30kd |
| Uniprot ID : | Q86WR0 |

Application

| | |
|-----------------------|---|
| Reactivity: | Human |
| Tested Application: | ELISA, WB, IHC, IF |
| Recommended dilution: | WB: 1:500-1:2000; IHC: 1:20-1:200; IF: 1:20-1:200 |
| Image: | |

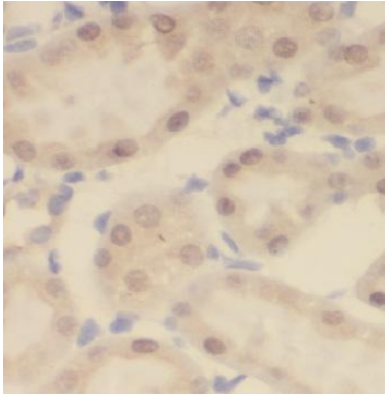
Wuhan Fine Biotech Co., Ltd.

B9 Bld, High-Tech Medical Devices Park, No. 818 Gaoxin Ave. East Lake High-Tech Development Zone. Wuhan, Hubei, China(430206)

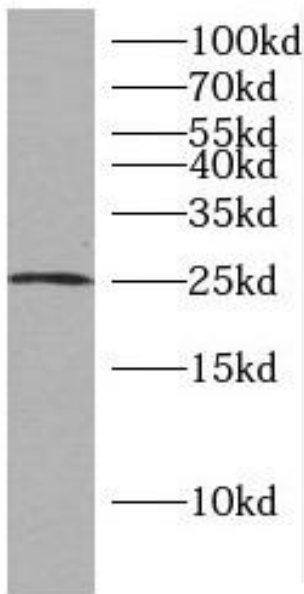
Tel : (0086)027-87384275

Fax: (0086)027-87800889

www.fn-test.com



Immunohistochemistry of paraffin-embedded human kidney using FNab01351(CCDC25 antibody) at dilution of 1:50



HeLa cells were subjected to SDS PAGE followed by western blot with FNab01351(CCDC25 antibody) at dilution of 1:500