

anti- CCDC153 antibody

Product Information

Catalog No.:	FNab01348
Size:	100µg
Form:	liquid
Purification:	Immunogen affinity purified
Purity:	≥95% as determined by SDS-PAGE
Host:	Rabbit
Clonality:	polyclonal
Clone ID:	None
IsoType:	IgG
Storage:	PBS with 0.02% sodium azide and 50% glycerol pH 7.3, -20°C for 12 months (Avoid repeated freeze / thaw cycles.)

Background

CCDC153's properties have yet to be elucidated. However, research suggests that it may be a neuronal subtype marker (PMID: 28166221). It has a molecular weight of 24 KDa and is often observed on a Western blot as a dimer.

Immunogen information

Immunogen:	coiled-coil domain containing 153
Synonyms:	CCDC153
Observed MW:	45-48 kDa
Uniprot ID :	Q494R4

Application

Reactivity:	Human, Mouse, Rat
Tested Application:	ELISA, WB, IF, IHC
Recommended dilution:	WB: 1:500-1:2000; IHC: 1:20-1:200; IF: 1:10-1:100
Image:	

1

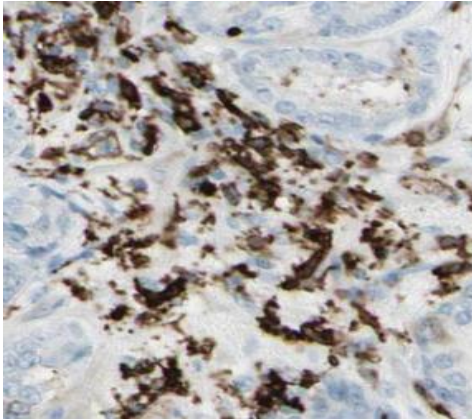
Wuhan Fine Biotech Co., Ltd.

B9 Bld, High-Tech Medical Devices Park, No. 818 Gaoxin Ave. East Lake High-Tech Development Zone. Wuhan, Hubei, China(430206)

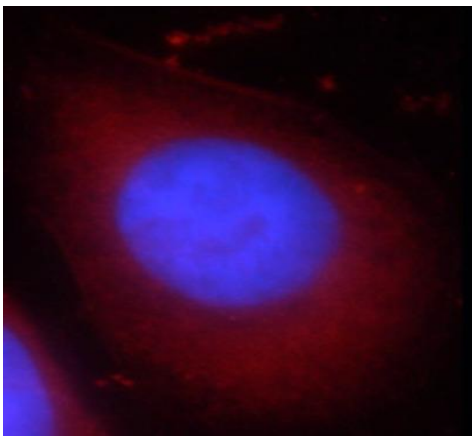
Tel : (0086)027-87384275

Fax: (0086)027-87800889

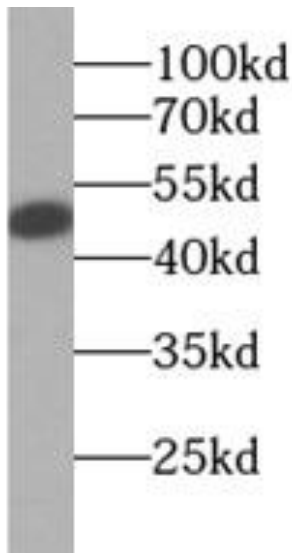
www.fn-test.com



Immunohistochemistry of paraffin-embedded human prostate cancer using FNab01348(CCDC153 antibody) at dilution of 1:50



Immunofluorescent analysis of HepG2 cells, using CCDC153 antibody FNab01348 at 1:25 dilution and Rhodamine-labeled goat anti-rabbit IgG (red). Blue pseudocolor = DAPI.



COLO 320 cells were subjected to SDS PAGE followed by western blot with FNab01348(CCDC153 antibody) at dilution of 1:300