

## anti- CBS antibody

### Product Information

Catalog No.:	FNab01327
Size:	100µg
Form:	liquid
Purification:	Immunogen affinity purified
Purity:	≥95% as determined by SDS-PAGE
Host:	Rabbit
Clonality:	polyclonal
Clone ID:	None
IsoType:	IgG
Storage:	PBS with 0.02% sodium azide and 50% glycerol pH 7.3, -20°C for 12 months (Avoid repeated freeze / thaw cycles.)

### Background

Hydro-lyase catalyzing the first step of the transsulfuration pathway, where the hydroxyl group of L-serine is displaced by L-homocysteine in a beta-replacement reaction to form L-cystathionine, the precursor of L-cysteine. This catabolic route allows the elimination of L-methionine and the toxic metabolite L-homocysteine(PubMed:23981774, PubMed:20506325, PubMed:23974653). Also involved in the production of hydrogen sulfide, a gasotransmitter with signaling and cytoprotective effects on neurons(By similarity).

### Immunogen information

Immunogen:	cystathionine-beta-synthase
Synonyms:	Beta thionase, CBS, cystathionine beta synthase, HIP4, Serine sulfhydrase
Observed MW:	61 kDa
Uniprot ID :	P35520

### Application

Reactivity:	Human, Mouse, Rat
-------------	-------------------

### Wuhan Fine Biotech Co., Ltd.

B9 Bld, High-Tech Medical Devices Park, No. 818 Gaoxin Ave. East Lake High-Tech Development Zone. Wuhan, Hubei, China(430206)

Tel : (0086)027-87384275

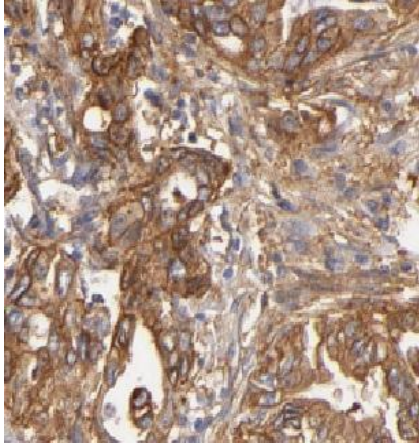
Fax: (0086)027-87800889

[www.fn-test.com](http://www.fn-test.com)

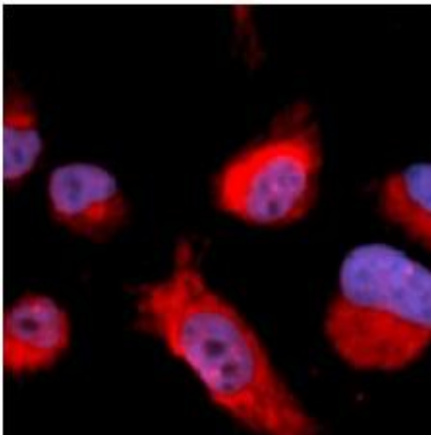
Tested Application: ELISA, WB, IHC, IF, IP

Recommended dilution: WB: 1:500-1:2000; IP: 1:500-1:1000; IHC: 1:50-1:200; IF: 1:20-1:200

Image:

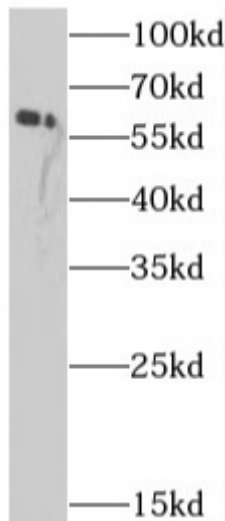
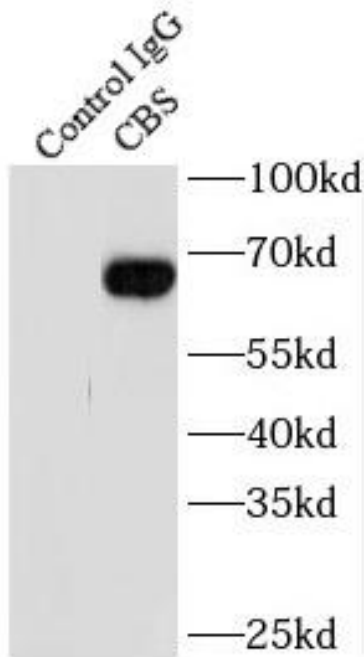


Immunohistochemistry of paraffin-embedded human pancreas cancer tissue slide using FNab01327(CBS Antibody) at dilution of 1:200 heat mediated antigen retrieved with Tris-EDTA buffer(pH9).



Immunofluorescent analysis of U2OS cells, using FNab01327(CBS Antibody) at 1:50 dilution and Rhodamine-labeled goat anti-rabbit IgG (red).

IP Result of anti-CBS (IP:FNab01327, 3ug;  
Detection:FNab01327 1:500) with mouse kidney  
tissue lysate 4000ug.



mouse kidney tissue were subjected to SDS PAGE  
followed by western blot with FNab01327(CBS  
antibody) at dilution of 1:500