

anti- CBLB antibody

Product Information

Catalog No.:	FNab01318
Size:	100µg
Form:	liquid
Purification:	Immunogen affinity purified
Purity:	≥95% as determined by SDS-PAGE
Host:	Rabbit
Clonality:	polyclonal
Clone ID:	None
IsoType:	IgG
Storage:	PBS with 0.02% sodium azide and 50% glycerol pH 7.3, -20°C for 12 months (Avoid repeated freeze / thaw cycles.)

Background

CBLB (Cbl proto-oncogene B, E3 ubiquitin protein ligase) is a protein-coding gene. Diseases associated with CBLB include cannabis dependence. GO annotations related to this gene include signal transducer activity and calcium ion binding. An important paralog of this gene is CBLC.

Immunogen information

Immunogen:	Cas-Br-M (murine) ecotropic retroviral transforming sequence b
Synonyms:	RNF56
Observed MW:	110 kDa
Uniprot ID :	Q13191

Application

Reactivity:	Human, Mouse
Tested Application:	ELISA, WB, IHC
Recommended dilution:	WB: 1:500 - 1:2000; IHC: 1:50 - 1:200
Image:	

1

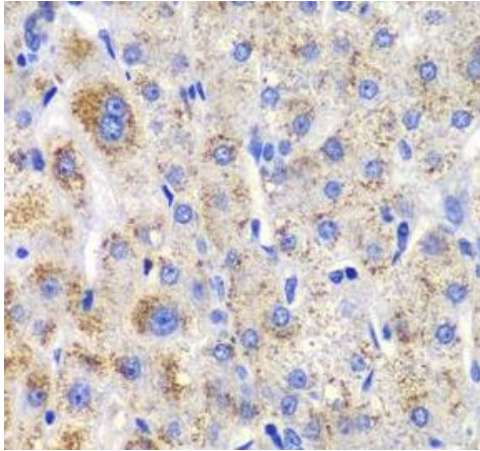
Wuhan Fine Biotech Co., Ltd.

B9 Bld, High-Tech Medical Devices Park, No. 818 Gaoxin Ave. East Lake High-Tech Development Zone. Wuhan, Hubei, China(430206)

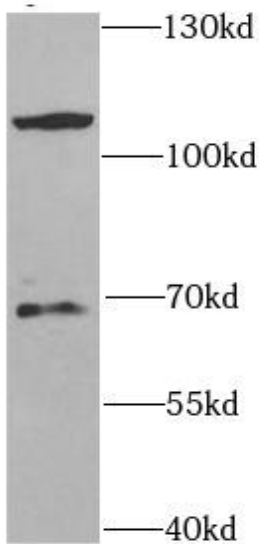
Tel : (0086)027-87384275

Fax: (0086)027-87800889

www.fn-test.com



Immunohistochemistry of paraffin-embedded human liver injury using FNab01318(CBLB antibody) at dilution of 1:100



HEK-293 cells were subjected to SDS PAGE followed by western blot with FNab01318(CBLB antibody) at dilution of 1:1000