

anti- CARM1 antibody

Product Information

Catalog No.:	FNab01275
Size:	100µg
Form:	liquid
Purification:	Immunogen affinity purified
Purity:	≥95% as determined by SDS-PAGE
Host:	Rabbit
Clonality:	polyclonal
Clone ID:	None
IsoType:	IgG
Storage:	PBS with 0.02% sodium azide and 50% glycerol pH 7.3, -20°C for 12 months (Avoid repeated freeze / thaw cycles.)

Background

CARM1, also named as PRMT4, belongs to the protein arginine N-methyltransferase family. It is a dual functional coregulator that facilitates transcription initiation by methylation of Arg17 and Arg26 of histone H3 and also dictates the subsequent coactivator complex disassembly by methylation of the steroid receptor coactivator family coactivators and p300/cAMP-response element-binding protein. CARM1 functions as a coactivator for many nuclear receptors, such as oestrogen receptor, androgen receptor, thyroid receptor and farnesoid X-receptor. It also coactivates other transcription factors such as myocyte enhancer factor 2C (MEF2C), β-catenin, p53, nuclear factor (NF)-κB and the cAMP-responsive element-binding factor. The enzymatic activity and coactivator function of CARM1 has been found to be inactivated through phosphorylation at a conserved serine residue at mitosis stage. This antibody was generated against a synthetic peptide corresponding to a fragment of human CARM1. It is expected to specifically recognize the CARM1. In certain type of cells, like HeLa, double bands can be detected with this antibody. This may be due to the additional PTM sites in cells themselves.

Immunogen information

Immunogen:	coactivator-associated arginine methyltransferase 1
Synonyms:	CARM1, PRMT4
Observed MW:	63-66 kDa, 55 kDa

Wuhan Fine Biotech Co., Ltd.

B9 Bld, High-Tech Medical Devices Park, No. 818 Gaoxin Ave. East Lake High-Tech Development Zone. Wuhan, Hubei, China(430206)

Uniprot ID : Q86X55

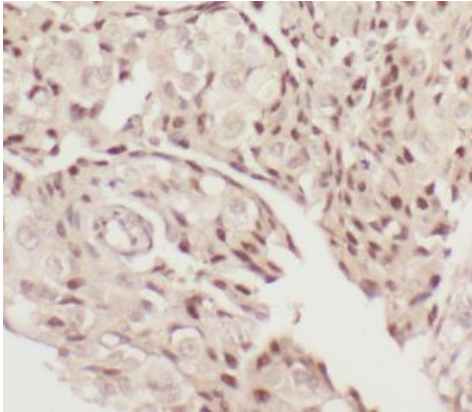
Application

Reactivity: Human, Mouse, Rat, Monkey

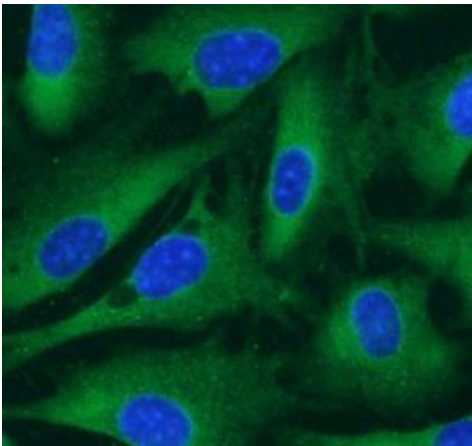
Tested Application: ELISA, IHC, WB, IF

Recommended dilution: WB: 1:1000-1:5000; IHC: 1:50-1:500; IF: 1:20-1:200

Image:



Immunohistochemistry of paraffin-embedded human breast cancer using FNab01275(CARM1 antibody) at dilution of 1:50



Immunofluorescent analysis of NIH/3T3 cells using FNab01275 (CARM1 antibody) at dilution of 1:50 and Alexa Fluor 488-conjugated Goat Anti-Rabbit IgG(H+L)

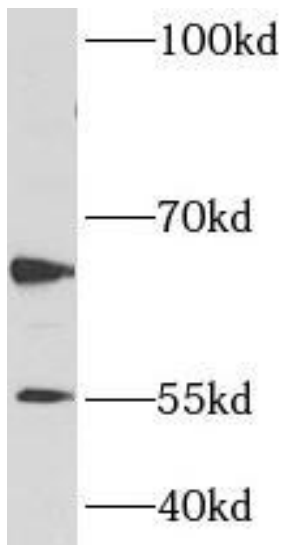
Wuhan Fine Biotech Co., Ltd.

B9 Bld, High-Tech Medical Devices Park, No. 818 Gaoxin Ave. East Lake High-Tech Development Zone. Wuhan, Hubei, China(430206)

Tel : (0086)027-87384275

Fax: (0086)027-87800889

www.fn-test.com



NIH/3T cells were subjected to SDS PAGE followed by western blot with FNab01275(CARM1 antibody) at dilution of 1:500