

## anti- ATPB antibody

### Product Information

Catalog No.:	FNab00733
Size:	100µg
Form:	liquid
Purification:	Immunogen affinity purified
Purity:	≥95% as determined by SDS-PAGE
Host:	Rabbit
Clonality:	polyclonal
Clone ID:	None
IsoType:	IgG
Storage:	PBS with 0.02% sodium azide and 50% glycerol pH 7.3, -20°C for 12 months (Avoid repeated freeze / thaw cycles.)

### Background

None

### Immunogen information

Immunogen:	ATP synthase, H <sup>+</sup> transporting, mitochondrial F1 complex, beta polypeptide
Synonyms:	ATPMB, ATPSB, HEL-S-271
Observed MW:	56 kDa
UniprotID :	P06576

### Application

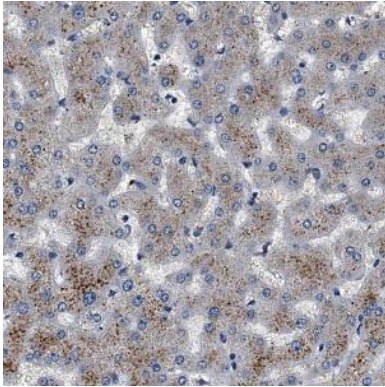
Reactivity:	Human, Mouse, Rat
Tested Application:	ELISA, WB, IHC, IF
Recommended dilution:	WB: 1:500 - 1:2000; IHC: 1:50 - 1:200; IF: 1:50 - 1:100
Image:	

### Wuhan Fine Biotech Co., Ltd.

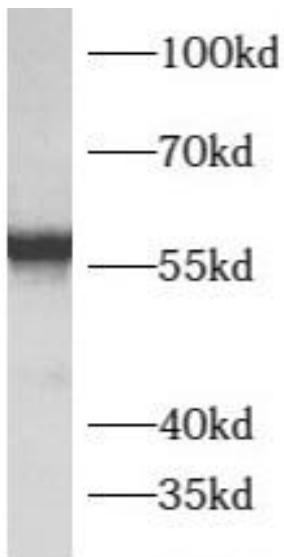
B9 Bld, High-Tech Medical Devices Park, No. 818 GaoxinAve. East Lake High-Tech Development Zone. Wuhan, Hubei, China(430206)

Tel : (0086)027-87384275

Fax: (0086)027-87800889 [www.fn-test.com](http://www.fn-test.com)



Immunohistochemistry of paraffin-embedded human liver using FNab00733(ATPB antibody) at dilution of 1:100



human heart tissue were subjected to SDS PAGE followed by western blot with FNab00733(ATPB antibody) at dilution of 1:500