

anti- ATP citrate lyase antibody

Product Information

Catalog No.:	FNab00687
Size:	100µg
Form:	liquid
Purification:	Immunogen affinity purified
Purity:	≥95% as determined by SDS-PAGE
Host:	Rabbit
Clonality:	polyclonal
Clone ID:	None
IsoType:	IgG
Storage:	PBS with 0.02% sodium azide and 50% glycerol pH 7.3, -20°C for 12 months (Avoid repeated freeze / thaw cycles.)

Background

None

Immunogen information

Immunogen:	ATP citrate lyase
Synonyms:	ACL, ACLY, ATP citrate (pro S)lyase, ATP citrate lyase, ATP citrate synthase, ATPCL, Citrate cleavage enzyme, CLATP
Observed MW:	110-120kd
UniprotID :	P53396

Application

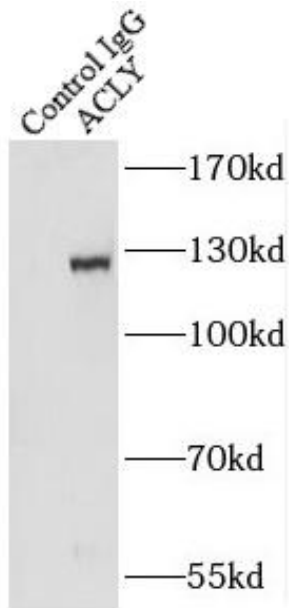
Reactivity:	Human, Mouse, Rat
Tested Application:	ELISA, WB, IF, FC, IP
Recommended dilution:	WB: 1:1000-1:4000; IP: 1:500-1:2000 for WB; IF: 1:10-1:100
Image:	

Wuhan Fine Biotech Co., Ltd.

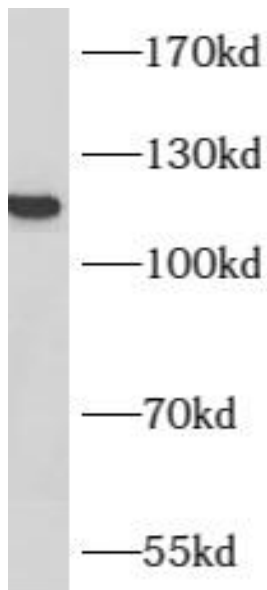
B9 Bld, High-Tech Medical Devices Park, No. 818 GaoxinAve. East Lake High-Tech Development Zone. Wuhan, Hubei, China(430206)

Tel : (0086)027-87384275

Fax: (0086)027-87800889 www.fn-test.com



IP Result of anti-ATP citrate lyase (IP:FNab00687, 4ug; Detection:FNab00687 1:1000) with K-562 cells lysate 3200ug.



LO2 cells were subjected to SDS PAGE followed by western blot with FNab00687(ATP citrate lyase Antibody) at dilution of 1:1000