

anti- ATF6 antibody

Product Information

Catalog No.:	FNab00664
Size:	100µg
Form:	liquid
Purification:	Immunogen affinity purified
Purity:	≥95% as determined by SDS-PAGE
Host:	Rabbit
Clonality:	polyclonal
Clone ID:	None
IsoType:	IgG
Storage:	PBS with 0.02% sodium azide and 50% glycerol pH 7.3, -20°C for 12 months (Avoid repeated freeze / thaw cycles.)

Background

Transmembrane glycoprotein of the endoplasmic reticulum that functions as a transcription activator and initiates the unfolded protein response (UPR) during endoplasmic reticulum stress. Cleaved upon ER stress, the N-terminal processed cyclic AMP-dependent transcription factor ATF-6 alpha translocates to the nucleus where it activates transcription of genes involved in the UPR. Binds DNA on the 5'-CCAC[GA]-3' half of the ER stress response element (ERSE) (5'-CCAAT-N(9)-CCAC[GA]-3') and of ERSE II (5'-ATTGG-N-CCACG-3'). Binding to ERSE requires binding of NF-Y to ERSE. Could also be involved in activation of transcription by the serum response factor. May play a role in foveal development and cone function in the retina.

Immunogen information

Immunogen:	activating transcription factor 6
Synonyms:	ATF6, ATF6 alpha, ATF6A
Observed MW:	90 kDa
Uniprot ID :	P18850

Application

Wuhan Fine Biotech Co., Ltd.

B9 Bld, High-Tech Medical Devices Park, No. 818 Gaoxin Ave. East Lake High-Tech Development Zone. Wuhan, Hubei, China (430206)

Tel : (0086)027-87384275

Fax: (0086)027-87800889

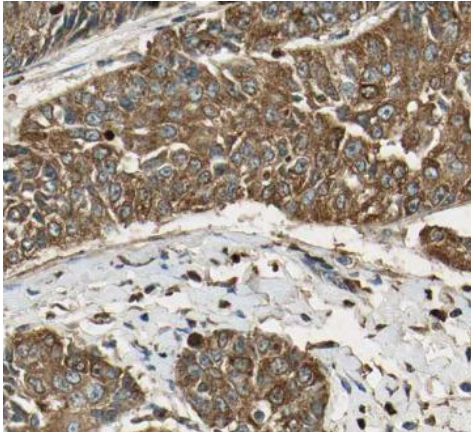
www.fn-test.com

Reactivity: Human, Mouse, Rat

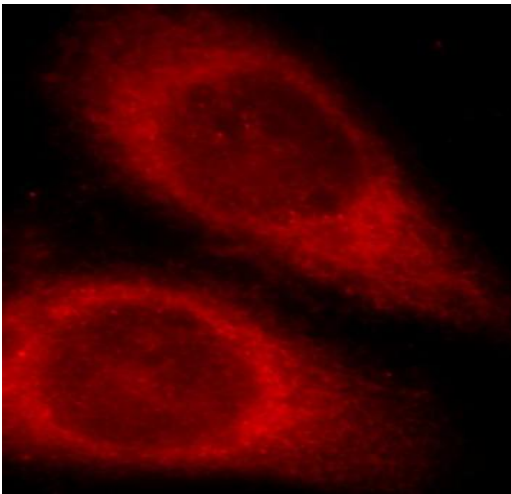
Tested Application: ELISA, WB, IF, IHC, IP

Recommended dilution: WB: 1:500-1:2000; IP: 1:500-1:2000; IHC: 1:20-1:200; IF: 1:10-1:100

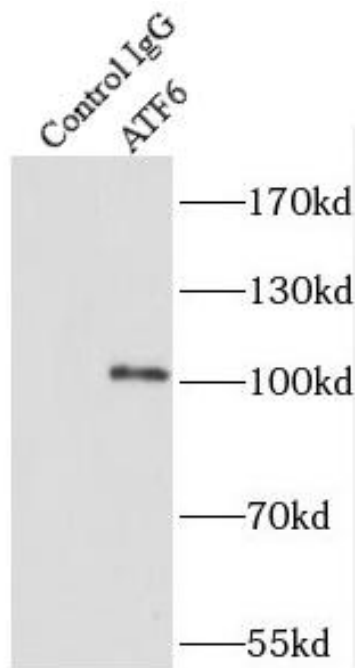
Image:



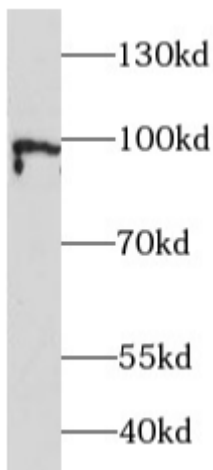
Immunohistochemistry of paraffin-embedded human cervical cancer tissue slide using FNab00664(ATF6 Antibody) at dilution of 1:50



Immunofluorescent analysis of HeLa cells using FNab00664 (ATF6 antibody) at dilution of 1:25 and Rhodamine-Goat anti-Rabbit IgG



IP Result of anti-ATF6 (IP:FNab00664, 4ug;
Detection:FNab00664 1:1500) with HeLa cells
lysate 2800ug.



MCF-7 cells were subjected to SDS PAGE
followed by western blot with FNab00664(ATF6
Antibody) at dilution of 1:3000