

anti- ARHGEF1 antibody

Product Information

Catalog No.:	FNab00558
Size:	100µg
Form:	liquid
Purification:	Immunogen affinity purified
Purity:	≥95% as determined by SDS-PAGE
Host:	Rabbit
Clonality:	polyclonal
Clone ID:	None
IsoType:	IgG
Storage:	PBS with 0.02% sodium azide and 50% glycerol pH 7.3, -20°C for 12 months (Avoid repeated freeze / thaw cycles.)

Background

Seems to play a role in the regulation of RhoAGTPase by guanine nucleotide-binding alpha-12(GNA12) and alpha-13(GNA13) subunits. Acts as GTPase-activating protein(GAP) for GNA12 and GNA13, and as guanine nucleotide exchange factor(GEF) for RhoAGTPase. Activated G alpha 13/GNA13 stimulates the RhoGEF activity through interaction with the RGS-like domain. This GEF activity is inhibited by binding to activated GNA12. Mediates angiotensin-2-induced RhoA activation.

Immunogen information

Immunogen:	Rho guanine nucleotide exchange factor(GEF) 1
Synonyms:	ARHGEF1, GEF1, LBCL2, LSC, P115 RHOGEF, p115RhoGEF, SUB1.5
Observed MW:	102-110 kDa
UniprotID :	Q92888

Application

Reactivity:	Human, Mouse
-------------	--------------

Wuhan Fine Biotech Co., Ltd.

B9 Bld, High-Tech Medical Devices Park, No. 818 GaoxinAve.East Lake High-Tech Development Zone.Wuhan, Hubei, China(430206)

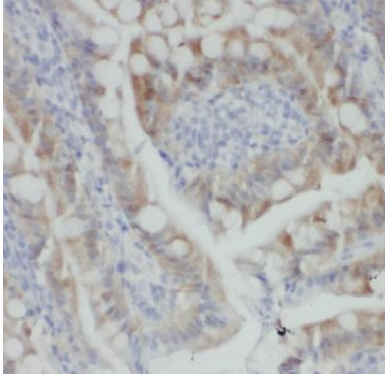
Tel : (0086)027-87384275

Fax: (0086)027-87800889 www.fn-test.com

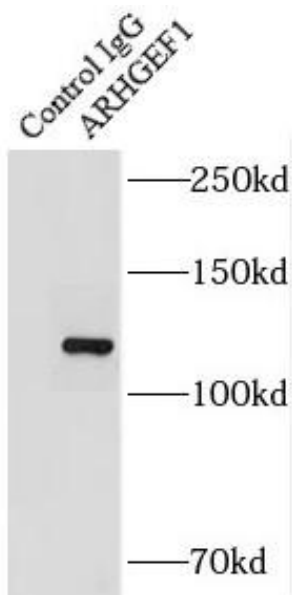
Tested Application: ELISA, IHC, WB, IP

Recommended dilution: WB: 1:500-1:2000; IP: 1:200-1:1000; IHC: 1:20-1:200

Image:



Immunohistochemistry of paraffin-embedded human colon using FNab00558(ARHGEF1 antibody) at dilution of 1:50



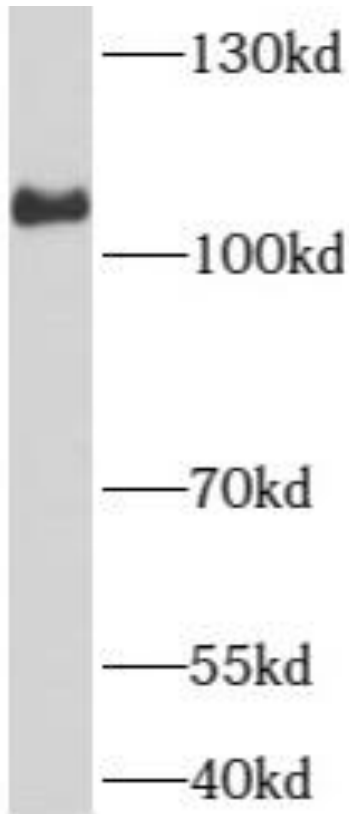
IP Result of anti-ARHGEF1 (IP:FNab00558, 4ug; Detection:FNab00558 1:1000) with HEK-293 cells lysate 2800ug.

Wuhan Fine Biotech Co., Ltd.

B9 Bld, High-Tech Medical Devices Park, No. 818 GaoxinAve. East Lake High-Tech Development Zone. Wuhan, Hubei, China(430206)

Tel : (0086)027-87384275

Fax: (0086)027-87800889 www.fn-test.com



HEK-293 cells were subjected to SDS PAGE followed by western blot with FNab00558(ARHGEF1 antibody) at dilution of 1:1000