

## anti- Annexin A2 antibody

### Product Information

Catalog No.:	FNab00430
Size:	100µg
Form:	liquid
Purification:	Immunogen affinity purified
Purity:	≥95% as determined by SDS-PAGE
Host:	Rabbit
Clonality:	polyclonal
Clone ID:	None
IsoType:	IgG
Storage:	PBS with 0.02% sodium azide and 50% glycerol pH 7.3, -20°C for 12 months (Avoid repeated freeze / thaw cycles.)

### Background

This gene encodes a member of the annexin family. Members of this calcium-dependent phospholipid-binding protein family play a role in the regulation of cellular growth and in signal transduction pathways. This protein functions as an autocrine factor which heightens osteoclast formation and bone resorption. This gene has three pseudogenes located on chromosomes 4, 9 and 10, respectively. Multiple alternatively spliced transcript variants encoding different isoforms have been found for this gene.

### Immunogen information

Immunogen:	annexin A2
Synonyms:	Annexin 2, annexin A2, Annexin II, ANX2, ANX2L4, ANXA2, CAL1H, Calpactin 1 heavy chain, Calpactin I heavy chain, Chromobindin 8, LIP2, Lipocortin II, LPC2, LPC2D, P36, PAP IV, Protein I
Observed MW:	38 kDa
Uniprot ID :	P07355

### Application

1

### Wuhan Fine Biotech Co., Ltd.

B9 Bld, High-Tech Medical Devices Park, No. 818 Gaoxin Ave. East Lake High-Tech Development Zone. Wuhan, Hubei, China(430206)

Tel : (0086)027-87384275

Fax: (0086)027-87800889

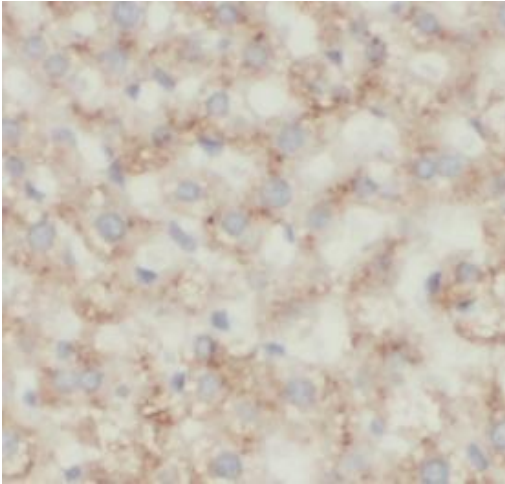
[www.fn-test.com](http://www.fn-test.com)

Reactivity: Human, Mouse, Rat

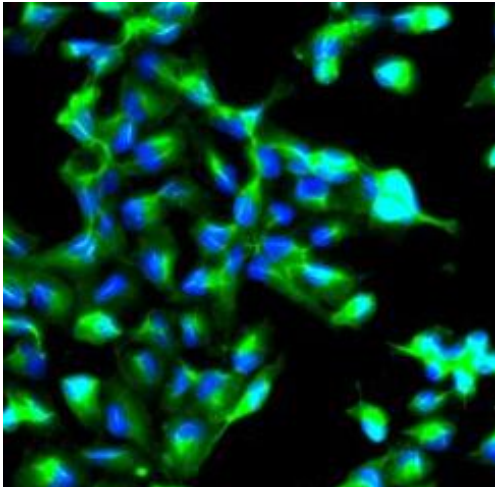
Tested Application: ELISA, IHC, IF, WB

Recommended dilution: WB: 1:500 - 1:2000; IHC: 1:50 - 1:200; IF: 1:20 - 1:50

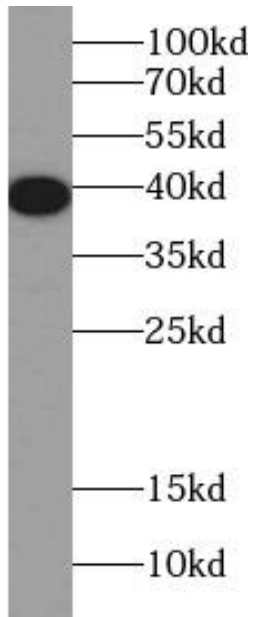
Image:



Immunohistochemistry of paraffin-embedded human liver tissue slide using FNab00430( Annexin A2 Antibody) at dilution of 1:200



Immunofluorescence analysis of A549 cells using FNab00430( Annexin A2 Antibody). Blue: DAPI for nuclear staining.



HeLa cells were subjected to SDS PAGE followed by western blot with FNab00430( Annexin A2 Antibody) at dilution of 1:1000