

anti- alpha Tubulin antibody

Product Information

Catalog No.:	FNab00335
Size:	100µg
Form:	liquid
Purification:	Protein A+G purification
Purity:	≥95% as determined by SDS-PAGE
Host:	Mouse
Clonality:	monoclonal
Clone ID:	4A10
IsoType:	IgG2b
Storage:	PBS with 0.02% sodium azide and 50% glycerol pH 7.3, -20°C for 12 months (Avoid repeated freeze / thaw cycles.)

Background

There are five tubulins in human cells: alpha, beta, gamma, delta, and epsilon. Tubulins are conserved across species. They form heterodimers, which multimerize to form a microtubule filament. An alpha and beta tubulin heterodimer is the basic structural unit of microtubules. The heterodimer does not come apart, once formed. The alpha and beta tubulins, which are each about 55 kDa MW, are homologous but not identical. Alpha, beta, and gamma tubulins have all been used as loading controls. Tubulin expression may vary according to resistance to antimicrobial and antimitotic drugs.

Immunogen information

Immunogen:	tubulin, alpha 1b
Synonyms:	Alpha Tubulin, Alpha tubulin ubiquitous, alpha tubulin, a tubulin, TUBA1B, tubulin, tubulin, alpha 1b
Observed MW:	50-55 kDa
Uniprot ID :	P68363

Application

Reactivity:	Human, Mouse, Rat
Tested Application:	ELISA, IHC, IF, WB, FC, IP
Recommended dilution:	WB: 1:2000-1:10000; IP: 1:500-1:5000; IF: 1:50-1:500; IHC: 1:50-1:500

1

Wuhan Fine Biotech Co., Ltd.

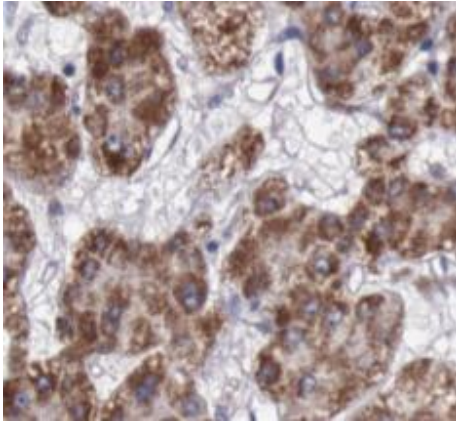
B9 Bld, High-Tech Medical Devices Park, No. 818 Gaoxin Ave. East Lake High-Tech Development Zone. Wuhan, Hubei, China(430206)

Tel : (0086)027-87384275

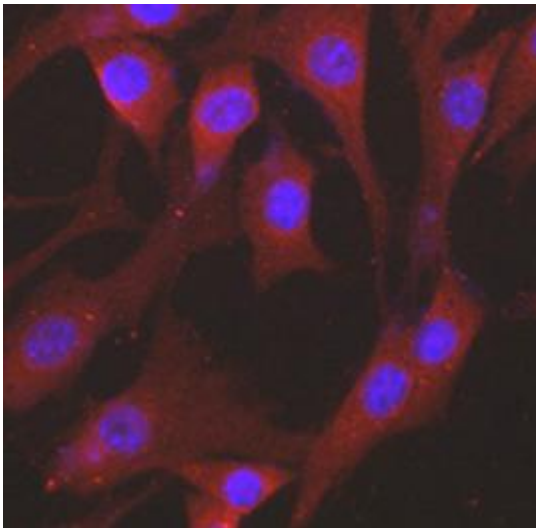
Fax: (0086)027-87800889

www.fn-test.com

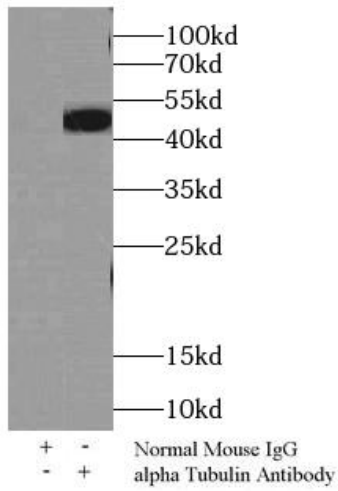
Image:



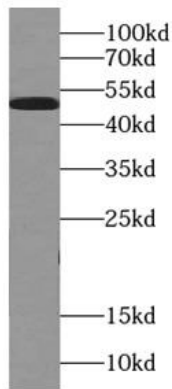
Immunohistochemistry of paraffin-embedded human liver cancer tissue slide using FNab00335(alpha Tubulin Antibody) at dilution of 1:100



Immunofluorescent analysis of HepG2 cells using FNab00335 (alpha Tubulin Antibody) at dilution of 1:100 and CY3-Goat anti-Rabbit IgG



IP Result of anti-alpha Tubulin (IP: FNab00335, 4ug; Detection: FNab00335 1:1000) with HeLa cells lysate 2500ug.



HeLa cells were subjected to SDS PAGE followed by western blot with FNab00335(alpha Tubulin Antibody) at dilution of 1:10000